



ZH23 SERIES

PRODUCT OVERVIEW

RENHOTEC GROUP LIMITED

☎ : 86-027-81296316

🌐 : www.renhotec.com ✉ : info@renhotec.com

Headquarters(Wuhan): No.555 Wenhua Avenue, Hongshan District, Wuhan
430074, China

Factory(Dongguan): No.25 Ningjiang Road, Humen Town, Dongguan City
Guangdong Province, China

Factory(jiangmen): Building 5, Wanyang Zhongchuang City, Daze Industrial
Park, Jiangmen City, Guangdong Province, China

ZH23 series environment-resistant bayonet electrical connector

ZH23 series bayonet connectors have the characteristics of environmental resistance, five-button positioning, anti-insertion, and bayonet quick connection.

Used in low frequency AC and DC circuits. It can be matched and interchanged with the Russian connector CHL23 series.



Technical performance

Ambient temperature: -60 °C~+200 °C(maximum 200 °C)

Vibration: Acceleration 40g (1-5000Hz)

Impact: acceleration 500g (1 time); 150g (multiple times)

Operating Voltage	Level	Operating Voltage(V)	Test voltage (V)
	A	700	2100
	B	500	1850
	C	400	1600

Technical conditions: ГЕО.364.241ТУ

Technical specifications: Q/3E 20005-2003

Salt spray resistance: 96h

Relative humidity: 40 °C~65 °C 95%~98%

Insulation resistance: ≥5000 MΩ

Mechanical and working life: 500 cycles

Contact current	Ø1.0	Ø1.5	Ø2.0
	11A	20A	35A
Contact resistance	Ø1.0	Ø1.5	Ø2.0
	≤7.4 mΩ	≤2.5 mΩ	≤1.6 mΩ

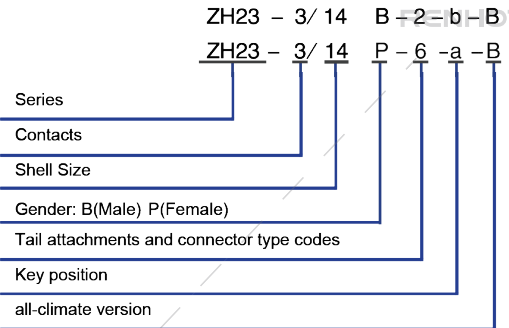
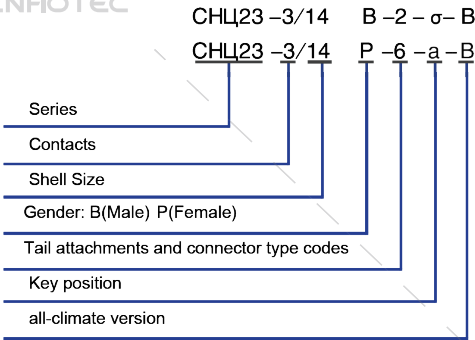
Description

No.	Item	Russian Code	China Code
1	Model	CHL23	ZH23
2	Contacts	3, 4, 7, 10, 19, 24, 28, 32, 41, 43, 45, 55, 61	3, 4, 7, 10, 19, 24, 28, 32, 41, 43, 45, 55, 61
3	Shell Size(mm)	14, 18, 22, 24, 27, 30, 33, 36, 39	14, 18, 22, 24, 27, 30, 33, 36, 39
4	Gender	B(Male) P(Female)	B(Male) P(Female)
5	Connector types & Tail attachments	1-Socket with simple tail attachment 4-Socket with angled clamp cable tail attachment 8-Plug with angled clamp cable tail attachment 2-Socket with straight clamp cable tail attachment 6-Plug with straight clamp cable tail attachment 11-Plug with simple tail attachment 12-Socket with type 09 thermoplastic sleeve type tail attachment 15-Socket with type 05 shielded straight tail attachment (memory ring) 16-Plug with type 05 shielded straight tail attachment (memory ring) 17-Socket with type 06 shielded angled attachment (memory ring) 18-Plug with type 06 shielded angled attachment (memory ring) 19-Socket with 07-type shielded simple tail attachment 20-Plug with 07-type shielded simple tail attachment 21-Socket with 08-type shielded straight clamp cable tail attachment 22-Plug with 08-type shielded straight clamp cable tail attachment 25-Socket with 10-type shielded angled tail attachment 26-Plug with 10-type shielded angled tail attachment 27-Socket with 11-type shielded angled cable tail attachment 28-Plug with 11-type shielded angled cable tail attachment	
6	Key position	Unmarked - standard key position a, σ, B, r	Unmarked - standard key position a, b, c, d
7	All-climate version	B	

ZH23 series environment-resistant bayonet electrical connector

Russian:

China:

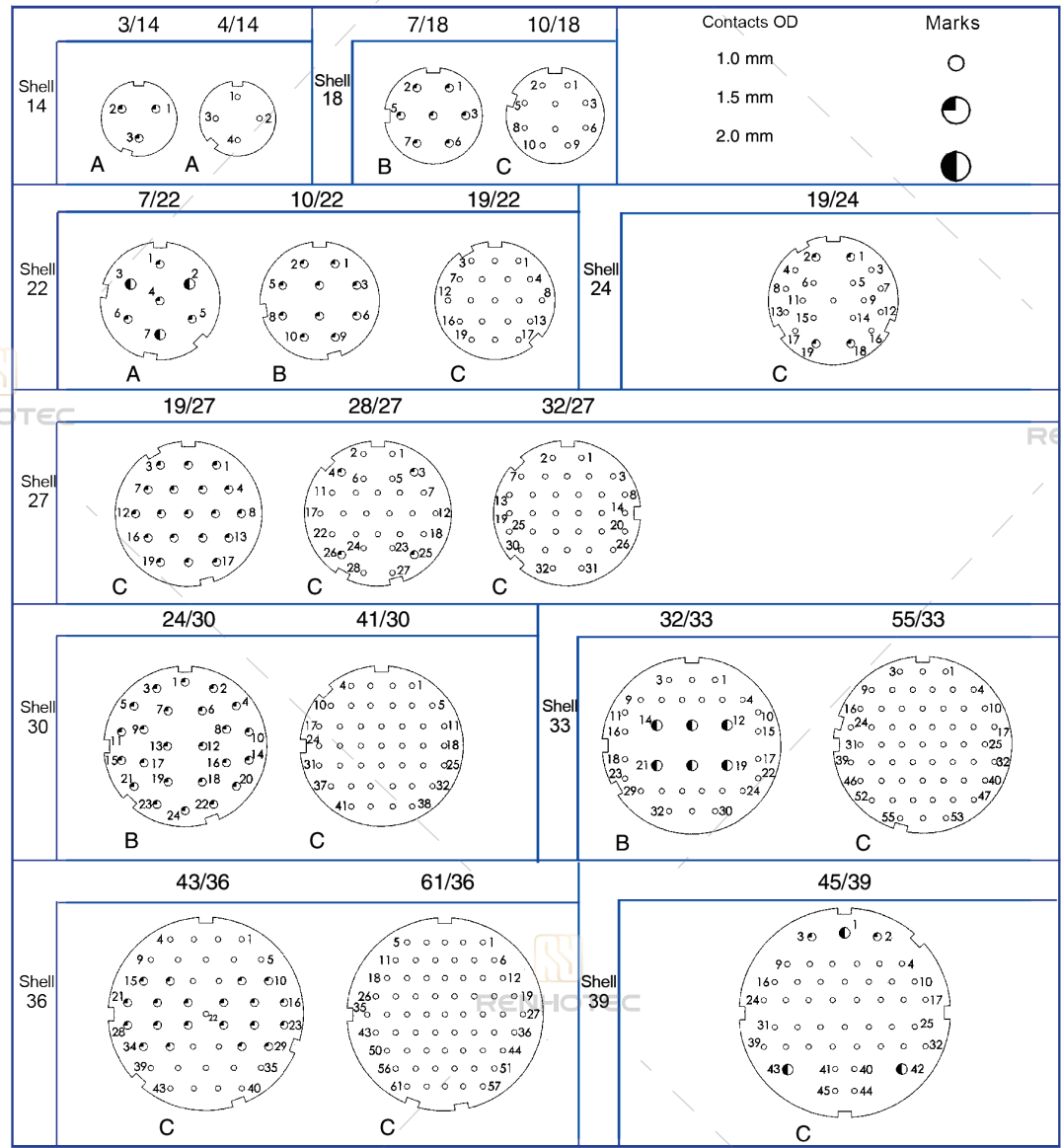


Tail attachments

Model	ZH23	N	-05	-33
Surface Finishing N- Nickel plated for the shell J- Cadmium plated for the shell				
Tail attachments Type 05-Shielded straight tail attachment (with memory ring) Type 06-Shielded angled tail attachment (with memory ring) Type 07-Shielded tail attachment (simple form) Type 08-Shielded straight clamp cable tail attachment Type 09-Thermoplastic tubular tail attachment Type 10-Shielded angled tail attachment Type 11-Shielded angled cable tail attachment				
Shell size 14, 18, 22, 24, 27, 30, 33, 36, 39				

ZH23 series environment-resistant bayonet electrical connector

Pin arrangements



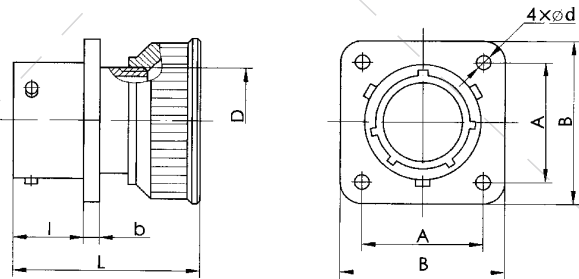
ZH23 series environment-resistant bayonet electrical connector

Key Positions

Model	a、 (a)	σ、 (b)	B、 (c)	Γ (d)	No mark	Model	a、 (a)	σ、 (b)	B、 (c)	Γ (d)	No mark
3/14	160				0	28/27	45	150	195		0
4/14		135			0	32/27	45	135		270	0
7/18	90				0	24/30	90	135	200		0
10/18		70			0	41/30	45	90			0
7/22	80	170	225		0	32/33	90	120			0
10/22		100	195		0	55/33	75	90		165	0
19/22	30		225		0	43/36	90	135	200	250	0
19/24	30	120	245		0	61/36	90	160	190		0
19/27	30	195			0	45/39	90	180	270	315	0

Installation Dimensions

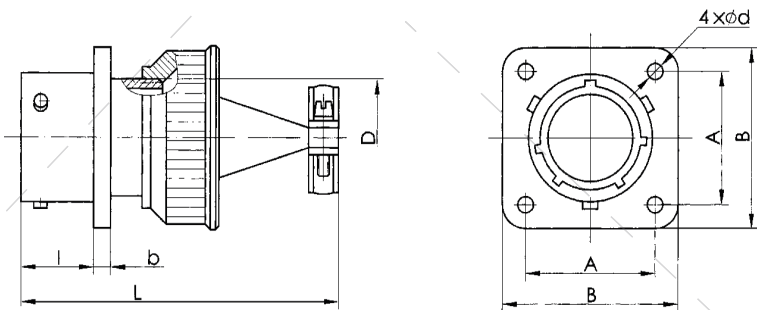
⊙ 1 - Socket with simple tail attachment



Model	Size in mm						
	A	Bmax	D	dmin	lmax	bmax	Lmax
CHL23-4/14B(P)-1-B	16.5	21.7	M14x0.5	2.2	11.3	1.4	32.5
CHL23-3/14B(P)-1-B							
CHL23-10/18B(P)-1-B	19.5	25.9	M18x1				
CHL23-7/18B(P)-1-B							
CHL23-19/22B(P)-1-B							
CHL23-10/22B(P)-1-B	23	29.4	M22x1				
CHL23-7/22B(P)-1-B							
CHL23-19/24B(P)-1-B	25	31.4	M24x1				
CHL23-32/27B(P)-1-B							
CHL23-19/27B(P)-1-B	27	33.4	M27x1			1.8	
CHL23-28/27B(P)-1-B							
CHL23-41/30B(P)-1-B	31	37.8	M30x1				
CHL23-24/30B(P)-1-B							
CHL23-55/33B(P)-1-B	34	41.5	M33x1		14.5	2	
CHL23-32/33B(P)-1-B							
CHL23-61/36B(P)-1-B	36.5	44.5	M36x1		15.3		
CHL23-43/36B(P)-1-B							
CHL23-45/39B(P)-1-B	40	46.4	M39x1				

ZH23 series environment-resistant bayonet electrical connector

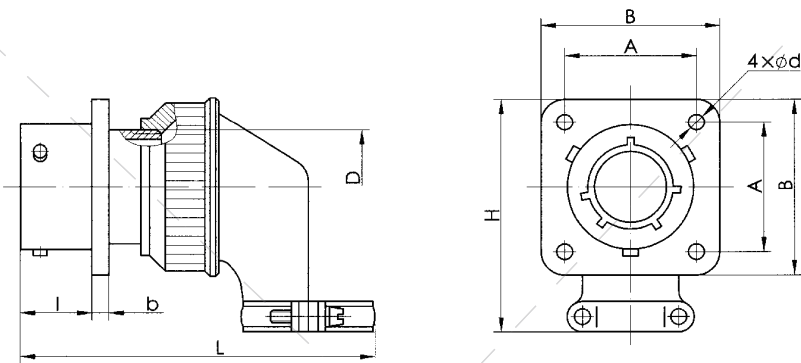
2 - Socket with straight clamp cable tail attachment



Model	Size in mm												
	A	Bmax	D	dmin	lmax	bmax	Lmax						
CHЦ23-4/14B(P)-2-B	16.5	21.7	M14×0.5	2.2	11.3	1.4	42						
CHЦ23-3/14B(P)-2-B													
CHЦ23-10/18B(P)-2-B			M18×1										
CHЦ23-7/18B(P)-2-B	19.5	25.9	M18×1			1.8	48						
CHЦ23-19/22B(P)-2-B													
CHЦ23-10/22B(P)-2-B	23	29.4	M22×1										
CHЦ23-7/22B(P)-2-B													
CHЦ23-19/24B(P)-2-B	25	31.4	M24×1										
CHЦ23-32/27B(P)-2-B													
CHЦ23-19/27B(P)-2-B	27	33.4	M27×1										
CHЦ23-28/27B(P)-2-B													
CHЦ23-41/30B(P)-2-B	31	37.8	M30×1		14.5	2	50						
CHЦ23-24/30B(P)-2-B													
CHЦ23-55/33B(P)-2-B	34	41.5	M33×1		15.3								
CHЦ23-32/33B(P)-2-B													
CHЦ23-61/36B(P)-2-B	36.5	44.5	M36×1										
CHЦ23-43/36B(P)-2-B													
CHЦ23-45/39B(P)-2-B	40	46.4	M39×1										

ZH23 series environment-resistant bayonet electrical connector

4 - Socket with angled clamp cable tail attachment

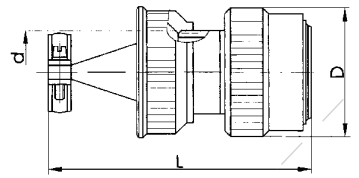


Model	Size in mm													
	A	Bmax	D	dmin	lmax	bmax	Hmax	Lmax						
CHL23-4/14B(P)-4-B	16.5	21.7	M14×0.5	2.2	11.3	1.4	69	69						
CHL23-3/14B(P)-4-B														
CHL23-10/18B(P)-4-B			M18×1											
CHL23-7/18B(P)-4-B	19.5	25.9	M18×1			4.6								
CHL23-19/22B(P)-4-B														
CHL23-10/22B(P)-4-B	23	29.4	M22×1											
CHL23-7/22B(P)-4-B														
CHL23-19/24B(P)-4-B	25	31.4	M24×1											
CHL23-32/27B(P)-4-B														
CHL23-19/27B(P)-4-B	27	33.4	M27×1											
CHL23-28/27B(P)-4-B														
CHL23-41/30B(P)-4-B	31	37.8	M30×1			2.15								
CHL23-24/30B(P)-4-B														
CHL23-55/33B(P)-4-B	34	41.5	M33×1											
CHL23-32/33B(P)-4-B														
CHL23-61/36B(P)-4-B	36.5	44.5	M36×1											
CHL23-43/36B(P)-4-B														
CHL23-45/39B(P)-4-B	40	46.4	M39×1											

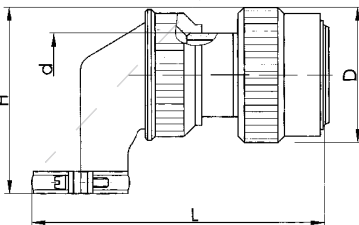
ZH23 series environment-resistant bayonet electrical connector

ZH23 series environment-resistant bayonet electrical connector

6 - Plug with straight clamp cable tail attachment



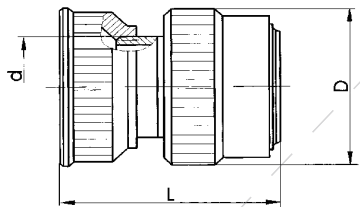
8 - Plug with angled clamp cable tail attachment




ENHOTECH 型号	Size in mm		
	Dmax	d	Lmax
CHC23-4/14B(P)-6-B	22.6	M14×0.5	50
CHC23-3/14B(P)-6-B			
CHC23-10/18B(P)-6-B			
CHC23-7/18B(P)-6-B	26	M18×1	
CHC23-19/22B(P)-6-B			
CHC23-10/22B(P)-6-B			
CHC23-7/22B(P)-6-B	29.7	M22×1	
CHC23-19/24B(P)-6-B			
CHC23-32/27B(P)-6-B			
CHC23-19/27B(P)-6-B	35.3	M27×1	
CHC23-28/27B(P)-6-B			
CHC23-41/30B(P)-6-B			
CHC23-24/30B(P)-6-B	38	M30×1	
CHC23-55/33B(P)-6-B			
CHC23-32/33B(P)-6-B			
CHC23-61/36B(P)-6-B	42	M33×1	
CHC23-43/36B(P)-6-B			
CHC23-45/39B(P)-6-B	46	M36×1	
	49	M39×1	

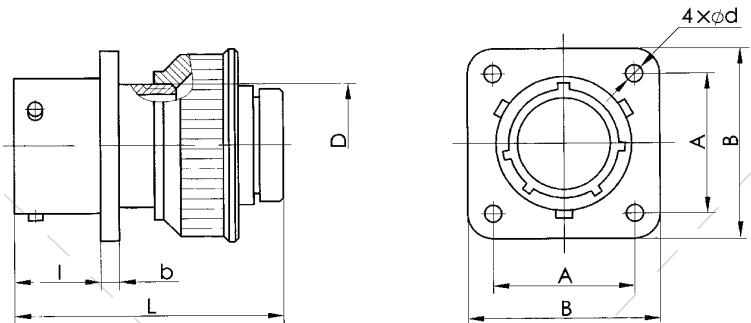
Model	Size in mm			
	D	d	Hmax	Lmax
CHL23-4/14B(P)-8-B	22	M14×0.5	45	69
CHL23-3/14B(P)-8-B				
CHL23-10/18B(P)-8-B				
CHL23-7/18B(P)-8-B	26	M18×1		
CHL23-19/22B(P)-8-B				
CHL23-10/22B(P)-8-B				
CHL23-7/22B(P)-8-B	29.5	M22×1		
CHL23-19/24B(P)-8-B				
CHL23-32/27B(P)-8-B				
CHL23-19/27B(P)-8-B	35	M27×1		
CHL23-28/27B(P)-8-B				
CHL23-41/30B(P)-8-B				
CHL23-24/30B(P)-8-B	38	M30×1		
CHL23-55/33B(P)-8-B				
CHL23-32/33B(P)-8-B				
CHL23-61/36B(P)-8-B	42	M33×1		
CHL23-43/36B(P)-8-B				
CHL23-45/39B(P)-8-B	46	M36×1		
	49	M39×1		

11 - Plug with simple tail attachment



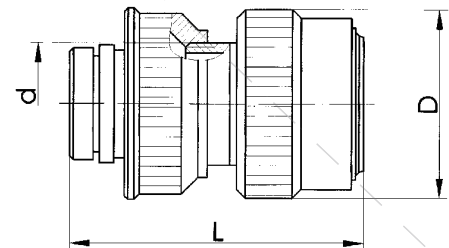
 Model	Size in mm		
	Dmax	d	Lmax
CHL23-4/14B(P)-11-B	22	M14x0.5	32.5
CHL23-3/14B(P)-11-B			
CHL23-10/18B(P)-11-B			
CHL23-7/18B(P)-11-B	26	M18x1	
CHL23-19/22B(P)-11-B			
CHL23-10/22B(P)-11-B			
CHL23-7/22B(P)-11-B	29.5	M22x1	
CHL23-19/24B(P)-11-B			
CHL23-32/27B(P)-11-B			
CHL23-19/27B(P)-11-B	35	M27x1	
CHL23-28/27B(P)-11-B			
CHL23-41/30B(P)-11-B			
CHL23-24/30B(P)-11-B	38	M30x1	
CHL23-55/33B(P)-11-B			
CHL23-32/33B(P)-11-B			
CHL23-61/36B(P)-11-B	42	M33x1	
CHL23-43/36B(P)-11-B			
CHL23-45/39B(P)-11-B	46	M36x1	
	49	M39x1	


12 - Socket with type 09 thermoplastic sleeve type tail attachment



Model	Size in mm						
	A	Bmax	D	dmin	lmax	bmax	Lmax
CHL23-4/14B(P)-12-B	16.5	21.7	M14×0.5	2.2	11.3	1.4	50
CHL23-3/14B(P)-12-B							
CHL23-10/18B(P)-12-B	19.5	25.9	M18×1				
CHL23-7/18B(P)-12-B							
CHL23-19/22B(P)-12-B	23	29.4	M22×1				
CHL23-10/22B(P)-12-B							
CHL23-7/22B(P)-12-B							
CHL23-19/24B(P)-12-B	25	31.4	M24×1	3.2			
CHL23-32/27B(P)-12-B	27	33.4	M27×1				
CHL23-19/27B(P)-12-B							
CHL23-28/27B(P)-12-B							
CHL23-41/30B(P)-12-B	31	37.8	M30×1				
CHL23-24/30B(P)-12-B							
CHL23-55/33B(P)-12-B							
CHL23-32/33B(P)-12-B	34	41.5	M33×1	14.5		2	
CHL23-61/36B(P)-12-B							
CHL23-43/36B(P)-12-B	36.5	44.5	M36×1	15.3			
CHL23-45/39B(P)-12-B					40	46.4	M39×1

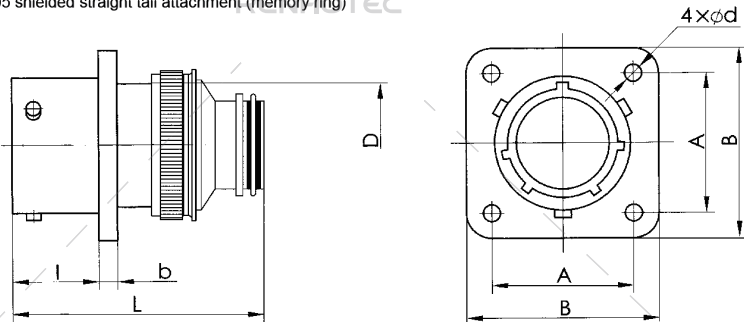
13 - Plug with type 09 thermoplastic sleeve tail attachment



Model	Size in mm 		
	Dmax	d	Lmax
CHL23-4/14B(P)-13-B	22	M14x0.5	50
CHL23-3/14B(P)-13-B			
CHL23-10/18B(P)-13-B			
CHL23-7/18B(P)-13-B	26	M18x1	
CHL23-19/22B(P)-13-B			
CHL23-10/22B(P)-13-B			
CHL23-7/22B(P)-13-B	29.5	M22x1	
CHL23-19/24B(P)-13-B			
CHL23-32/27B(P)-13-B			
CHL23-19/27B(P)-13-B	32	M24x1	
CHL23-28/27B(P)-13-B			
CHL23-41/30B(P)-13-B			
CHL23-24/30B(P)-13-B	35	M27x1	
CHL23-55/33B(P)-13-B			
CHL23-32/33B(P)-13-B			
CHL23-61/36B(P)-13-B	38	M30x1	
CHL23-43/36B(P)-13-B			
CHL23-45/39B(P)-13-B			
CHL23-43/36B(P)-13-B	42	M33x1	51
CHL23-45/39B(P)-13-B			
CHL23-45/39B(P)-13-B			
CHL23-45/39B(P)-13-B	46	M36x1	
CHL23-45/39B(P)-13-B			
CHL23-45/39B(P)-13-B	49	M39x1	

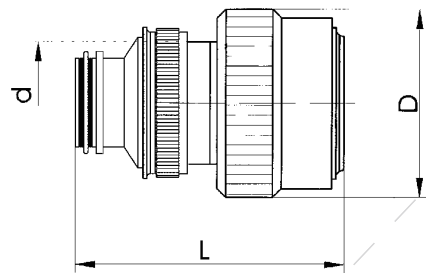
ZH23 series environment-resistant bayonet electrical connector

15 - Socket with type 05 shielded straight tail attachment (memory ring)



Model	Size in mm									
	A	Bmax	D	dmin	lmax	bmax	Lmax			
CHL23-4/14B(P)-15-B	16.5	21.7	M14×0.5	2.2	11.3	1.4	 55			
CHL23-3/14B(P)-15-B										
CHL23-10/18B(P)-15-B	19.5	25.9	M18×1	3.2		1.8				
CHL23-7/18B(P)-15-B										
CHL23-19/22B(P)-15-B	23	29.4	M22×1					2		
CHL23-10/22B(P)-15-B										
CHL23-7/22B(P)-15-B	25	31.4	M24×1							
CHL23-19/24B(P)-15-B										
CHL23-32/27B(P)-15-B	27	33.4	M27×1							
CHL23-19/27B(P)-15-B										
CHL23-28/27B(P)-15-B	31	37.8	M30×1							
CHL23-41/30B(P)-15-B										
CHL23-24/30B(P)-15-B	34	41.5	M33×1		14.5					
CHL23-55/33B(P)-15-B										
CHL23-32/33B(P)-15-B	36.5	44.5	M36×1		15.3					
CHL23-61/36B(P)-15-B										
CHL23-43/36B(P)-15-B	40	46.4	M39×1							
CHL23-45/39B(P)-15-B										

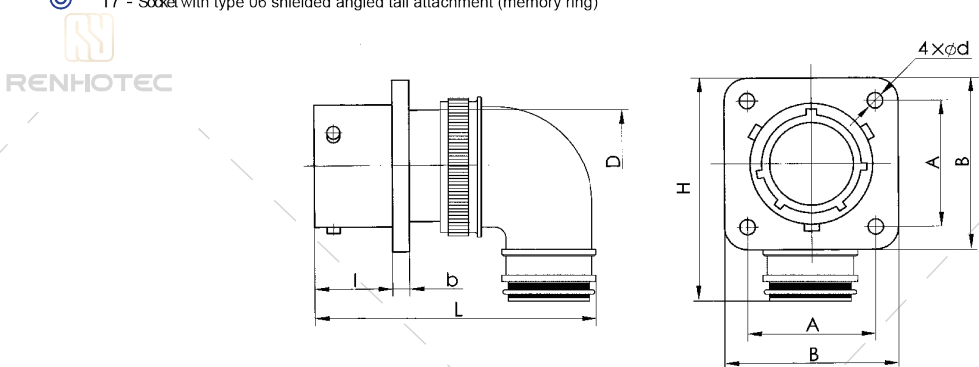
16 - Plug with type 05 shielded straight tail attachment (memory ring)



Model	Size in mm		
	Dmax	d	Lmax
CHL23-4/14B(P)-16-B	22	M14x0.5	55
CHL23-3/14B(P)-16-B			
CHL23-10/18B(P)-16-B	26	M18x1	
CHL23-7/18B(P)-16-B			
CHL23-19/22B(P)-16-B	29.5	M22x1	
CHL23-10/22B(P)-16-B			
CHL23-7/22B(P)-16-B	32	M24x1	
CHL23-19/24B(P)-16-B			
CHL23-32/27B(P)-16-B	35	M27x1	
CHL23-19/27B(P)-16-B			
CHL23-28/27B(P)-16-B	38	M30x1	
CHL23-41/30B(P)-16-B			
CHL23-24/30B(P)-16-B	42	M33x1	
CHL23-55/33B(P)-16-B			
CHL23-32/33B(P)-16-B	46	M36x1	
CHL23-61/36B(P)-16-B			
CHL23-43/36B(P)-16-B	49	M39x1	
CHL23-45/39B(P)-16-B			

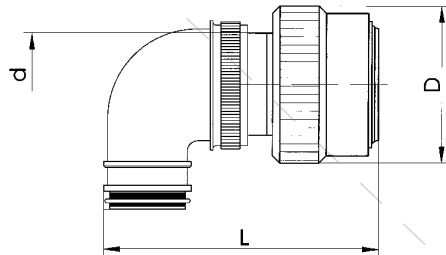
ZH23 series environment-resistant bayonet electrical connector

17 - Socket with type 06 shielded angled tail attachment (memory ring)



Model	Size in mm										
	A	Bmax	D	dmin	lmax	bmax	Lmax	Hmax			
CHЦ23-4/14B(P)-17-B	16.5	21.7	M14×0.5	2.2	11.3	1.4	40	69			
CHЦ23-3/14B(P)-17-B											
CHЦ23-10/18B(P)-17-B	19.5	25.9	M18×1	3.2		1.8					
CHЦ23-7/18B(P)-17-B											
CHЦ23-19/22B(P)-17-B	23	29.4	M22×1						2		
CHЦ23-10/22B(P)-17-B											
CHЦ23-7/22B(P)-17-B	25	31.4	M24×1								
CHЦ23-19/24B(P)-17-B											
CHЦ23-32/27B(P)-17-B	27	33.4	M27×1								
CHЦ23-19/27B(P)-17-B											
CHЦ23-28/27B(P)-17-B	31	37.8	M30×1								
CHЦ23-41/30B(P)-17-B											
CHЦ23-24/30B(P)-17-B	34	41.5	M33×1		14.5						
CHЦ23-55/33B(P)-17-B											
CHЦ23-32/33B(P)-17-B	36.5	44.5	M36×1		15.3						
CHЦ23-61/36B(P)-17-B											
CHЦ23-43/36B(P)-17-B	40	46.4	M39×1								
CHЦ23-45/39B(P)-17-B											

18 - Plug with type 06 shielded angled tail attachment (memory ring)

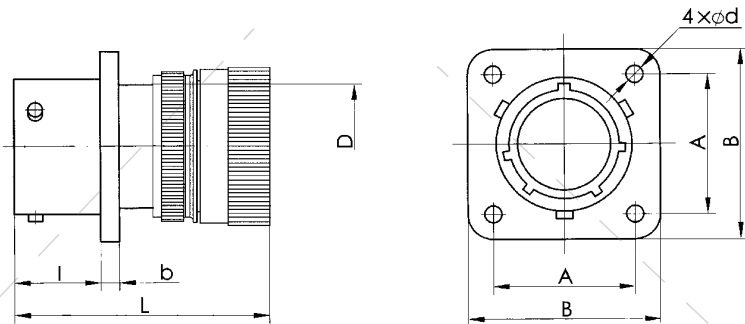



Model	Size in mm		
	Dmax	d	Lmax
CHL23-4/14B(P)-18-B	22	M14x0.5	40
CHL23-3/14B(P)-18-B			
CHL23-10/18B(P)-18-B	26	M18x1	
CHL23-7/18B(P)-18-B			
CHL23-19/22B(P)-18-B	29.5	M22x1	
CHL23-10/22B(P)-18-B			
CHL23-7/22B(P)-18-B	32	M24x1	
CHL23-19/24B(P)-18-B			
CHL23-32/27B(P)-18-B	35	M27x1	
CHL23-19/27B(P)-18-B			
CHL23-28/27B(P)-18-B	38	M30x1	
CHL23-41/30B(P)-18-B			
CHL23-24/30B(P)-18-B	42	M33x1	
CHL23-55/33B(P)-18-B			
CHL23-32/33B(P)-18-B	46	M36x1	
CHL23-61/36B(P)-18-B			
CHL23-43/36B(P)-18-B	49	M39x1	
CHL23-45/39B(P)-18-B			

ZH23 series environment-resistant bayonet electrical connector

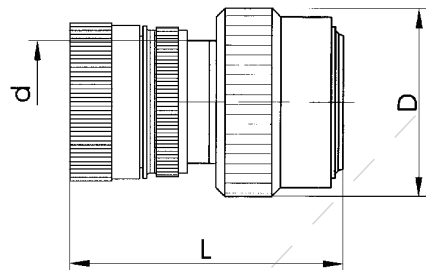
ZH23 series environment-resistant bayonet electrical connector


19 - Socket with 07 type shielded simple tail attachment



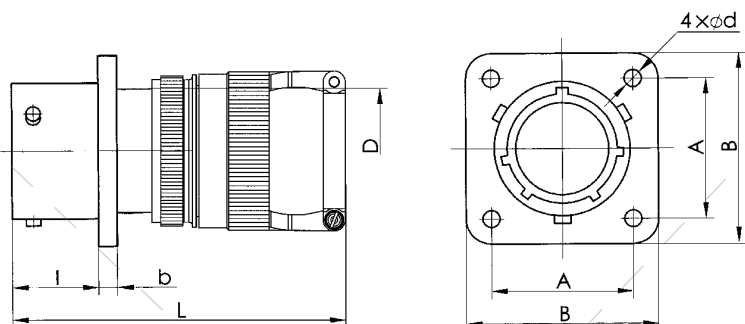
Model	Size in mm						
	A	Bmax	D	dmin	lmax	bmax	Lmax
CHЦ23-4/14B(P)-19-B	16.5	21.7	M14×0.5	2.2	11.3	1.4	 RENHOTECH 56
CHЦ23-3/14B(P)-19-B							
CHЦ23-10/18B(P)-19-B	19.5	25.9	M18×1	3.2			
CHЦ23-7/18B(P)-19-B							
CHЦ23-19/22B(P)-19-B	23	29.4	M22×1				
CHЦ23-10/22B(P)-19-B							
CHЦ23-7/22B(P)-19-B	25	31.4	M24×1				
CHЦ23-19/24B(P)-19-B							
CHЦ23-32/27B(P)-19-B	27	33.4	M27×1				
CHЦ23-19/27B(P)-19-B							
CHЦ23-28/27B(P)-19-B	31	37.8	M30×1				
CHЦ23-41/30B(P)-19-B							
CHЦ23-24/30B(P)-19-B	34	41.5	M33×1			14.5	
CHЦ23-55/33B(P)-19-B							
CHЦ23-32/33B(P)-19-B	36.5	44.5	M36×1	15.3		2	
CHЦ23-61/36B(P)-19-B							
CHЦ23-43/36B(P)-19-B							
CHЦ23-45/39B(P)-19-B							
CHЦ23-45/39B(P)-19-B	40	46.4	M39×1				

20 - Plug with 07 type shielded simple tail attachment



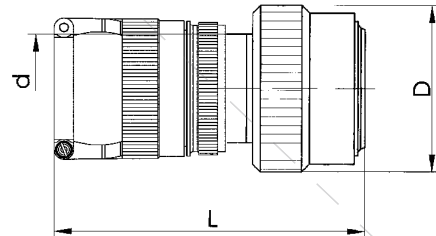
 Model	Size in mm		
	Dmax	d	Lmax
CHL23-4/14B(P)-20-B	22	M14x0.5	56
CHL23-3/14B(P)-20-B			
CHL23-10/18B(P)-20-B		M18x1	
CHL23-7/18B(P)-20-B			
CHL23-19/22B(P)-20-B	29.5		
CHL23-10/22B(P)-20-B			
CHL23-7/22B(P)-20-B			
CHL23-19/24B(P)-20-B	32	M24x1	
CHL23-32/27B(P)-20-B			
CHL23-19/27B(P)-20-B			
CHL23-28/27B(P)-20-B			
CHL23-41/30B(P)-20-B	38	M30x1	
CHL23-24/30B(P)-20-B			
CHL23-55/33B(P)-20-B			
CHL23-32/33B(P)-20-B			
CHL23-61/36B(P)-20-B	46	M36x1	
CHL23-43/36B(P)-20-B			
CHL23-45/39B(P)-20-B			

21 - Socket with 08 type shielded straight clamp cable tail attachment



Model	Size in mm						
	A	Bmax	D	dmin	lmax	bmax	Lmax
CHЦ23-4/14B(P)-21-B	16.5	21.7	M14×0.5	2.2	11.3	1.4	66
CHЦ23-3/14B(P)-21-B							
CHЦ23-10/18B(P)-21-B							
CHЦ23-7/18B(P)-21-B	19.5	25.9	M18×1	3.2			
CHЦ23-19/22B(P)-21-B							
CHЦ23-10/22B(P)-21-B							
CHЦ23-7/22B(P)-21-B	23	29.4	M22×1				
CHЦ23-19/24B(P)-21-B							
CHЦ23-32/27B(P)-21-B							
CHЦ23-19/27B(P)-21-B	25	31.4	M24×1				
CHЦ23-28/27B(P)-21-B							
CHЦ23-41/30B(P)-21-B							
CHЦ23-24/30B(P)-21-B	27	33.4	M27×1				
CHЦ23-55/33B(P)-21-B							
CHЦ23-32/33B(P)-21-B							
CHЦ23-61/36B(P)-21-B	31	37.8	M30×1				
CHЦ23-43/36B(P)-21-B							
CHЦ23-45/39B(P)-21-B							
CHЦ23-55/33B(P)-21-B	34	41.5	M33×1	14.5			
CHЦ23-32/33B(P)-21-B							
CHЦ23-61/36B(P)-21-B							
CHЦ23-43/36B(P)-21-B	36.5	44.5	M36×1	15.3			
CHЦ23-45/39B(P)-21-B							
CHЦ23-45/39B(P)-21-B							
CHЦ23-45/39B(P)-21-B	40	46.4	M39×1				
CHЦ23-45/39B(P)-21-B							
CHЦ23-45/39B(P)-21-B							

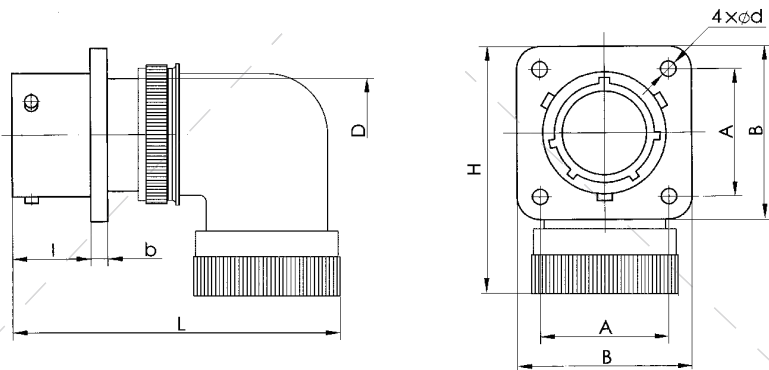
22 - Plug with 08 type shielded straight clamp cable tail attachment



Model	Size in mm		
	Dmax	d	Lmax
CHL23-4/14B(P)-22-B	22	M14x0.5	66
CHL23-3/14B(P)-22-B			
CHL23-10/18B(P)-22-B		26	
CHL23-7/18B(P)-22-B			
CHL23-19/22B(P)-22-B	29.5		
CHL23-10/22B(P)-22-B			
CHL23-7/22B(P)-22-B		32	
CHL23-19/24B(P)-22-B			
CHL23-32/27B(P)-22-B	35		
CHL23-19/27B(P)-22-B			
CHL23-28/27B(P)-22-B		38	
CHL23-41/30B(P)-22-B			
CHL23-24/30B(P)-22-B	42		
CHL23-55/33B(P)-22-B			
CHL23-32/33B(P)-22-B		46	
CHL23-61/36B(P)-22-B			
CHL23-43/36B(P)-22-B	49		
CHL23-45/39B(P)-22-B			

ZH23 series environment-resistant bayonet electrical connector

25 - Socket with type 10 shielded angled tail attachment



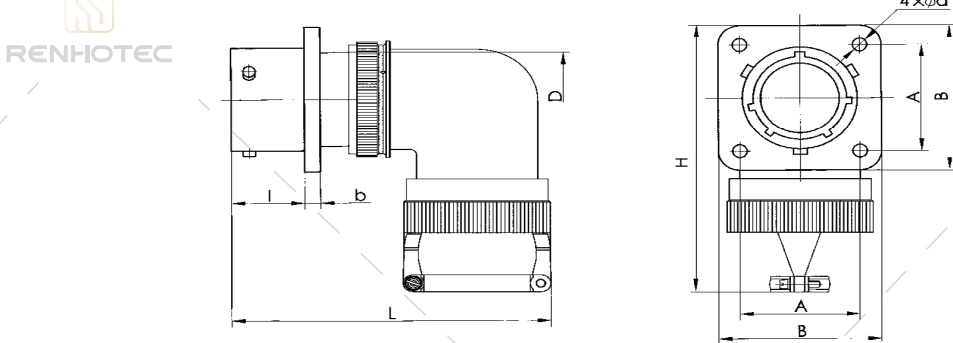
Model	Size in mm											
	A	Bmax	D	dmin	lmax	bmax	Lmax	Hmax				
CHЦ23-4/14B(P)-25-B	16.5	21.7	M14×0.5	2.2	11.3	1.4	66	57				
CHЦ23-3/14B(P)-25-B												
CHЦ23-10/18B(P)-25-B												
CHЦ23-7/18B(P)-25-B	19.5	25.9	M18×1			1.8	70	73				
CHЦ23-19/22B(P)-25-B												
CHЦ23-10/22B(P)-25-B	23	29.4	M22×1	3.2								
CHЦ23-7/22B(P)-25-B												
CHЦ23-19/24B(P)-25-B	25	31.4	M24×1	14.5								
CHЦ23-32/27B(P)-25-B												
CHЦ23-19/27B(P)-25-B	27	33.4	M27×1	2								
CHЦ23-28/27B(P)-25-B												
CHЦ23-41/30B(P)-25-B	31	37.8	M30×1	15.3								
CHЦ23-24/30B(P)-25-B												
CHЦ23-55/33B(P)-25-B	34	41.5	M33×1	78								
CHЦ23-32/33B(P)-25-B												
CHЦ23-61/36B(P)-25-B	36.5	44.5	M36×1									
CHЦ23-43/36B(P)-25-B												
CHЦ23-45/39B(P)-25-B	40	46.4	M39×1									

26 - Plug with type 10 shielded elbow attachment

Model	Size in mm		
	Dmax	d	Lmax
CHL23-4/14B(P)-26-B	22	M14×0.5	66
CHL23-3/14B(P)-26-B			
CHL23-10/18B(P)-26-B			
CHL23-7/18B(P)-26-B	26	M18×1	70
CHL23-19/22B(P)-26-B			
CHL23-10/22B(P)-26-B	29.5	M22×1	72
CHL23-7/22B(P)-26-B			
CHL23-19/24B(P)-26-B	32	M24×1	72
CHL23-32/27B(P)-26-B			
CHL23-19/27B(P)-26-B	35	M27×1	78
CHL23-28/27B(P)-26-B			
CHL23-41/30B(P)-26-B	38	M30×1	78
CHL23-24/30B(P)-26-B			
CHL23-55/33B(P)-26-B	42	M33×1	78
CHL23-32/33B(P)-26-B			
CHL23-61/36B(P)-26-B	46	M36×1	78
CHL23-43/36B(P)-26-B			
CHL23-45/39B(P)-26-B	49	M39×1	

ZH23 series environment-resistant bayonet electrical connector

27 - Socket with type 11 shielded angled cable tail attachment



Model	Size in mm											
	A	Bmax	D	dmin	lmax	bmax	Lmax	Hmax				
CHL23-4/14B(P)-27-B	16.5	21.7	M14×0.5	2.2	11.3	1.4	66	51				
CHL23-3/14B(P)-27-B												
CHL23-10/18B(P)-27-B												
CHL23-7/18B(P)-27-B	19.5	25.9	M18×1			1.8	72	87				
CHL23-19/22B(P)-27-B												
CHL23-10/22B(P)-27-B	23	29.4	M22×1	3.2								
CHL23-7/22B(P)-27-B												
CHL23-19/24B(P)-27-B	25	31.4	M24×1			1.8	72	87				
CHL23-32/27B(P)-27-B												
CHL23-19/27B(P)-27-B	27	33.4	M27×1									
CHL23-28/27B(P)-27-B												
CHL23-41/30B(P)-27-B	31	37.8	M30×1		14.5	2	78	113				
CHL23-24/30B(P)-27-B												
CHL23-55/33B(P)-27-B	34	41.5	M33×1									
CHL23-32/33B(P)-27-B												
CHL23-61/36B(P)-27-B	36.5	44.5	M36×1	15.3								
CHL23-43/36B(P)-27-B												
CHL23-45/39B(P)-27-B	40	46.4	M39×1									

28 - Plug with type 11 shielded elbow cable end attachment

Model	Size in mm		
	Dmax	d	Lmax
CHL23-4/14B(P)-28-B	22	M14×0.5	66
CHL23-3/14B(P)-28-B			
CHL23-10/18B(P)-28-B			
CHL23-7/18B(P)-28-B	26	M18×1	72
CHL23-19/22B(P)-28-B			
CHL23-10/22B(P)-28-B	29.5	M22×1	72
CHL23-7/22B(P)-28-B			
CHL23-19/24B(P)-28-B	32	M24×1	72
CHL23-32/27B(P)-28-B			
CHL23-19/27B(P)-28-B	35	M27×1	78
CHL23-28/27B(P)-28-B			
CHL23-41/30B(P)-28-B	38	M30×1	78
CHL23-24/30B(P)-28-B			
CHL23-55/33B(P)-28-B	42	M33×1	78
CHL23-32/33B(P)-28-B			
CHL23-61/36B(P)-28-B	46	M36×1	78
CHL23-43/36B(P)-28-B			
CHL23-45/39B(P)-28-B	49	M39×1	