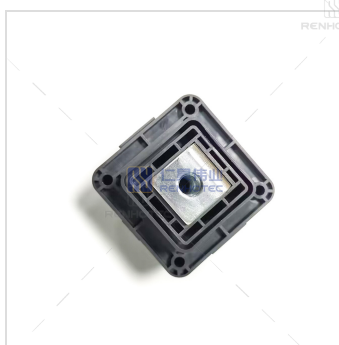




300A Waterproof High Voltage Battery Box Connector
Black

Part Number:

FPBOX3308-HA-M8RH



Basic Information

Body Style	Square
Color	Black

Material Specification

Contact Finish	Tin Plating
Contact Material	Copper Alloy
Flammability	UL94 V-0
Shell Material	Plastic

Mechanical Specification

Inside Thread	M8
Mounting Type	Panel Mount
Termination Method	Screw

Electrical Specification

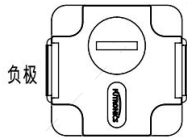
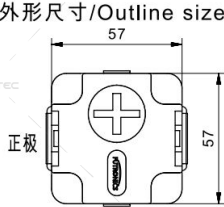
Insulation Resistance	≥5000MΩ
Rated Current	300A
Rated Voltage	1500V
Test Voltage	18KV DC

Environmental Specification

Ingress Protection	IP67 (Mated)
Operating Temperature	-40°C to +125°C
Salt Spray Resistance	48H (SST)

Size

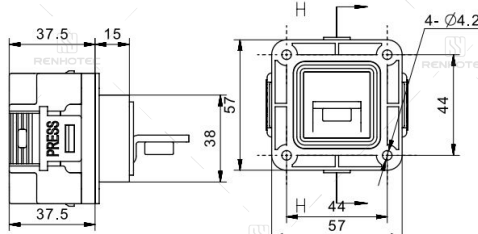
1.外形尺寸/Outline size



防尘盖型号	颜色
FPBOXCAP-01C	橙色
FPBOXCAP-01H	黑色

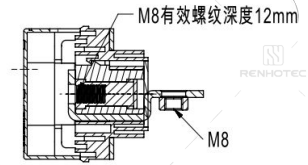
备注：如需单独采购防尘盖请按上表型号

规格表/Technical Data		
额定电流/Rated Current	300A	/
额定电压/Rating Voltage	1500VDC(MAX)	/
温度范围/Operation Temperature	-40°C~125°C	/
测试电压/Test Voltage	18kVDC(1min)	EIA-364-20



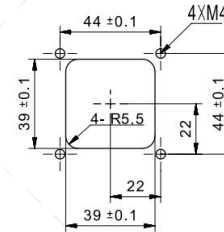
2.产品料号对应原则说明
(成品型号含防尘盖)：
Part number sequence
FPBOX3 3 0 8 - * M - T 8

C: 橙色 (标识 +)
H: 黑色 (标识 -)



SECTION H - H

3.面板开孔尺寸 Mounting interface



How to Order

1. Specify the upper and lower mounting thread specifications.
2. Specify the panel cutout shape.
4. Specify whether waterproofing is required.
1. Specify the rated current.
5. Specify whether a protective cap is needed.
6. Specify the main body color.

FOR EXAMPLE:

The product with an installation end M8 internal thread structure, a two-ear flange mounting base, a 500A rated current, and an insulation protective cover has the part number RHT-FM8-3457-32-500A-C.

Disclaimer

The information in this specification is subject to change without notice. Please confirm the latest version before use. Technical parameters are for reference only, and sufficient testing and verification should be conducted in actual applications.