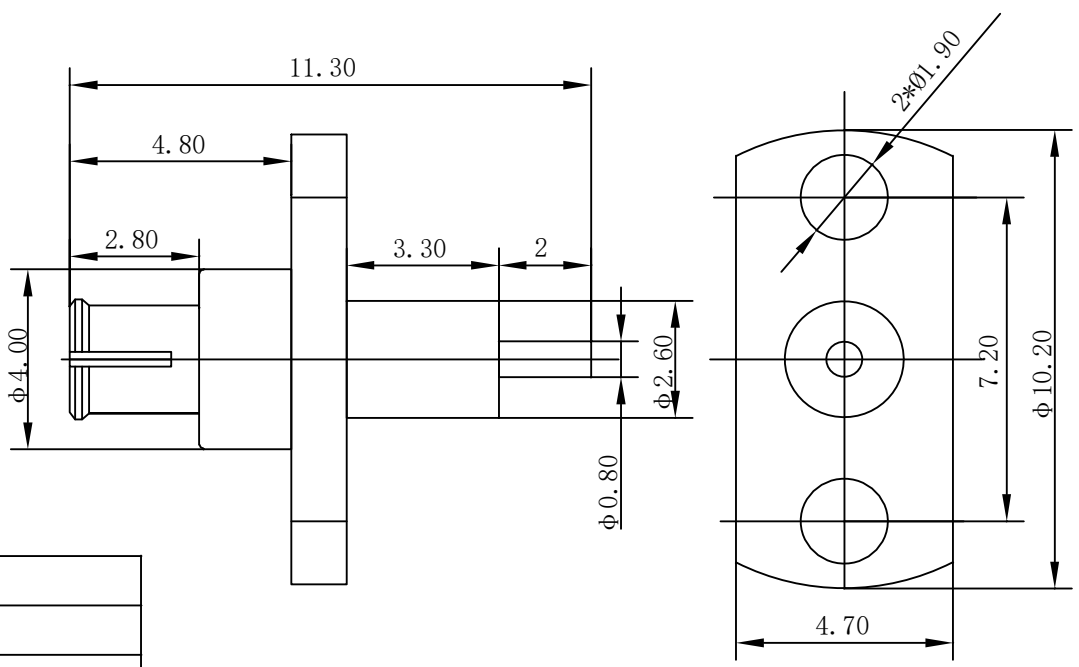




REV	DESCRIPTION	DRAWING	DATE
R1.0	First issue	FSH	2025.9.6



Project	Indicators
ProductName	RFConnector
FrequencyRange	DC-18GHz
VSWR	1.3:1(max)
Impedance	50 Ω
InsertionLoss	$\leq 0.06 * \sqrt{F}$ (GHz) dB
Dielectricwithstandvoltage	1000V
Servicelife	≥ 500
InsulationResistance	$\geq 5000M \Omega$
Connectortype	SMP-Female
OperationTemperature	-55 $^{\circ}C$ ~+125 $^{\circ}C$
Innerconductormaterial	BerylliumbronzeGoldplating
Externalconductormaterial	BrassbronzeGoldplating
Insulator	PTFE

-TOLERANCES- UNLESS OTHERWISE SPECIFIED UNLESS OTHERWISE SPECIFIED TOLERANCES FOR MILLIMETERS ARE: 0.5 - 8mm \pm 0.20mm 8 - 30mm \pm 0.25mm 30 -120mm \pm 0.30mm	RENHOTEC GROUP				
		PART DESCRIPTION: SMP 2-hole Female panel installation			
Appr:	P/N: RHT-628-2031				
Check: Jason	Date	Scale	Unit	Rev	Page
Draw: FSH	2025.9.6	1:1	MM	R1.0	1/1