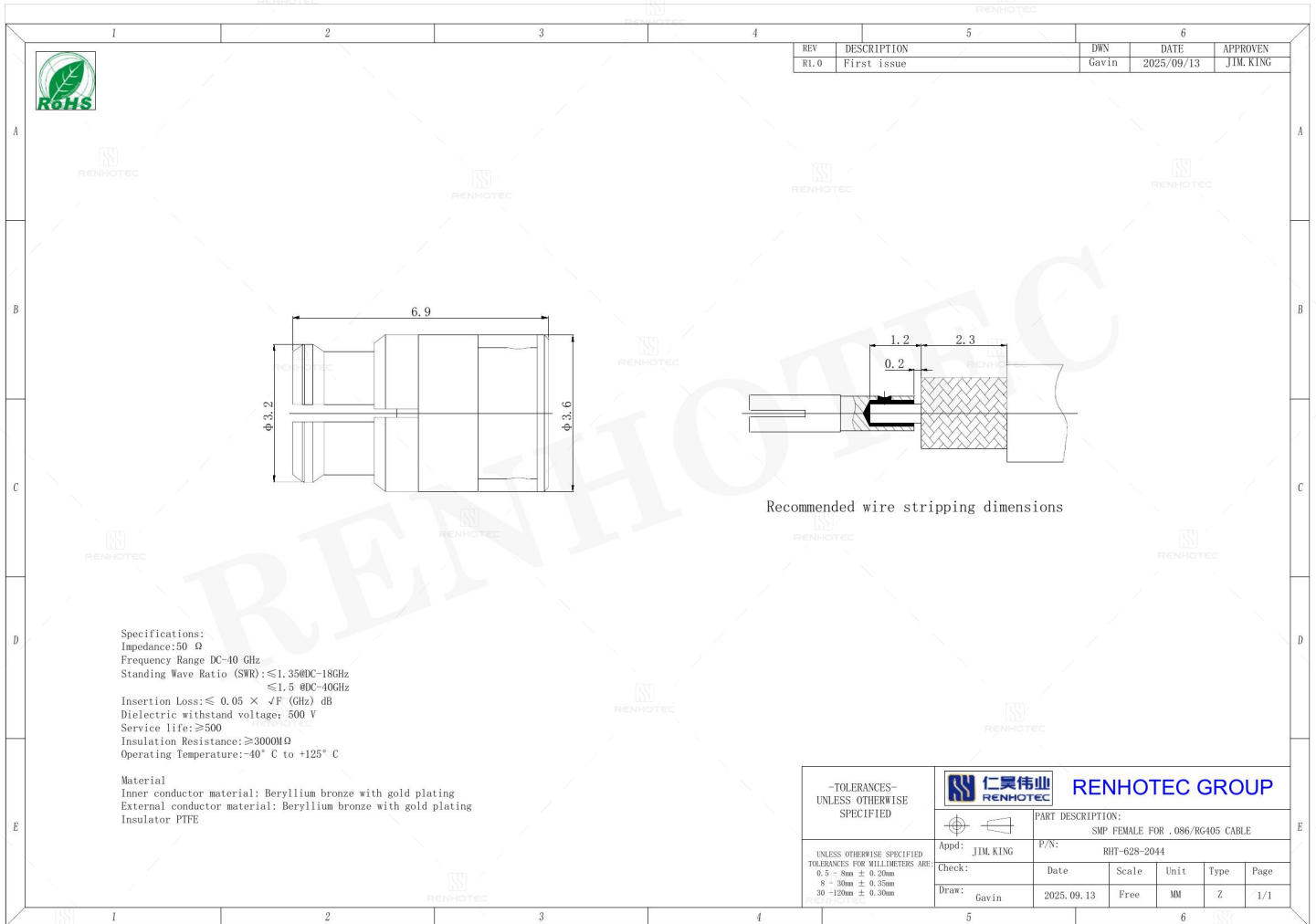


SMP Female for .086/RG405 Cable - RHT-628-2044

Drawing



Basic Information

Connector Type	Jack
Orientation	Straight
RF Series	SMP Type
Suitable Cable	.086/RG405

Electrical Specification

Dielectric Withstanding Voltage	500 V
Insertion Loss	≤0.05*√F (GHz) dB

Mechanical Specification

Mating Cycles 500 Cycles mini

Environmental Specification

Temperature Range -40°C to +125°C

Material and Finish

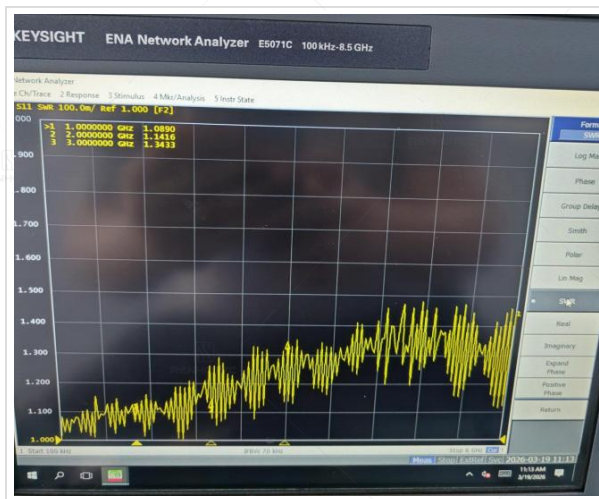
Component Description	Material	Finish
Outer Conductor	Beryllium Bronze	-
Outer Contact	-	Gold Plated
Insulator	PTFE	-
Contact	Beryllium Bronze	Gold Plated

Impedance Testing

Impedance 50 ohm

Frequency & VSWR Test Report

Frequency Range DC-40GHz



Contact Resistance Test

Contact Type

Female Pin



Working Voltage & Insulation Resistance Test

Insulation Resistance

3000MΩ



Disclaimer

The information in this specification is subject to change without notice. Please confirm the latest version before use. Technical parameters are for reference only, and sufficient testing and verification should be conducted in actual applications.