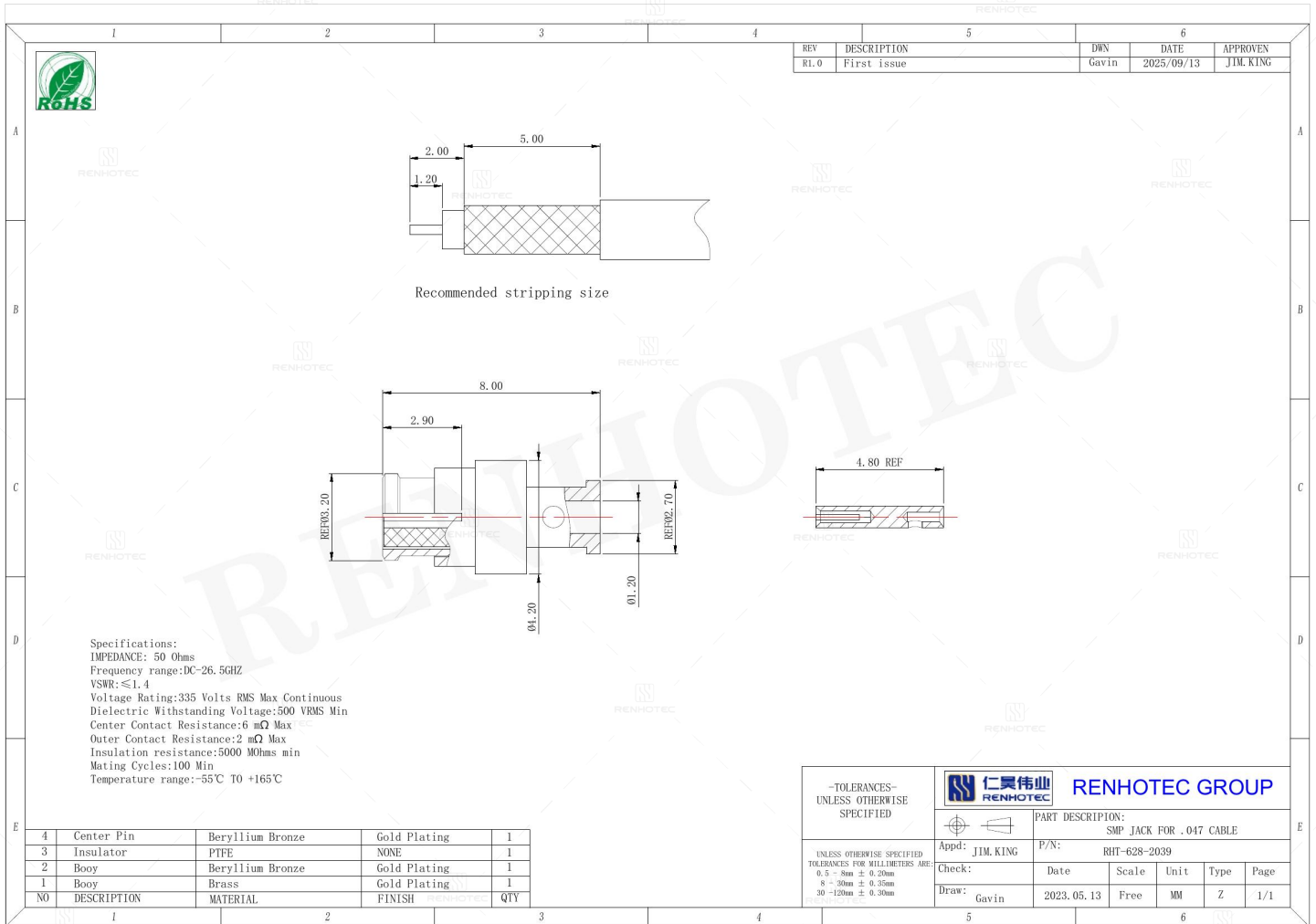


SMP Female Jack for .047 Cable - RHT-628-2039

Drawing



Basic Information

Connector Type	Jack
Orientation	Straight
RF Series	SMP Type
Suitable Cable	047 Cable

Electrical Specification

Dielectric Withstanding Voltage	500 V
--	-------

Mechanical Specification

Mating Cycles	100 Cycles mini
----------------------	-----------------

Environmental Specification

Temperature Range	-55°C to +165°C
-------------------	-----------------

Material and Finish

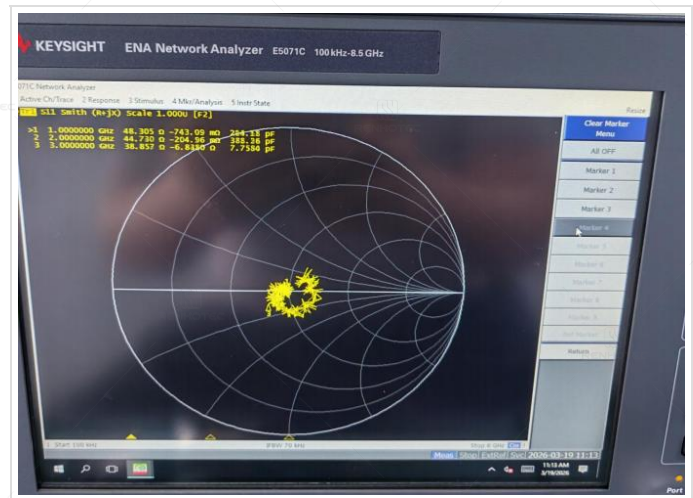
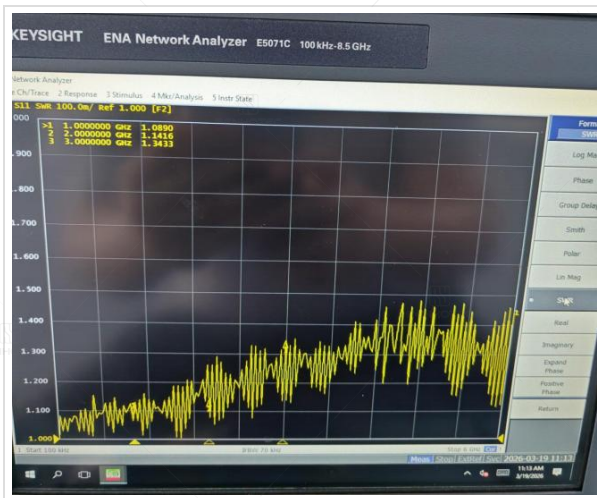
Component Description	Material	Finish
Insulator	PTFE	-
Contact	Beryllium Bronze	Gold Plated
Center Contact	Beryllium Bronze	Gold Plated

Impedance Testing

Impedance	50 ohm
-----------	--------

Frequency & VSWR Test Report

Frequency Range	DC-26.5GHz
VSWR	1.4 MAX



Contact Resistance Test

Contact Type	Female Pin
Center Contact Resistance	≤6mΩ
Outer Contact Resistance	≤2mΩ



Working Voltage & Insulation Resistance Test

Working Voltage	335 V rms
Insulation Resistance	5000MΩ Min



Disclaimer

The information in this specification is subject to change without notice. Please confirm the latest version before use. Technical parameters are for reference only, and sufficient testing and verification should be conducted in actual applications.