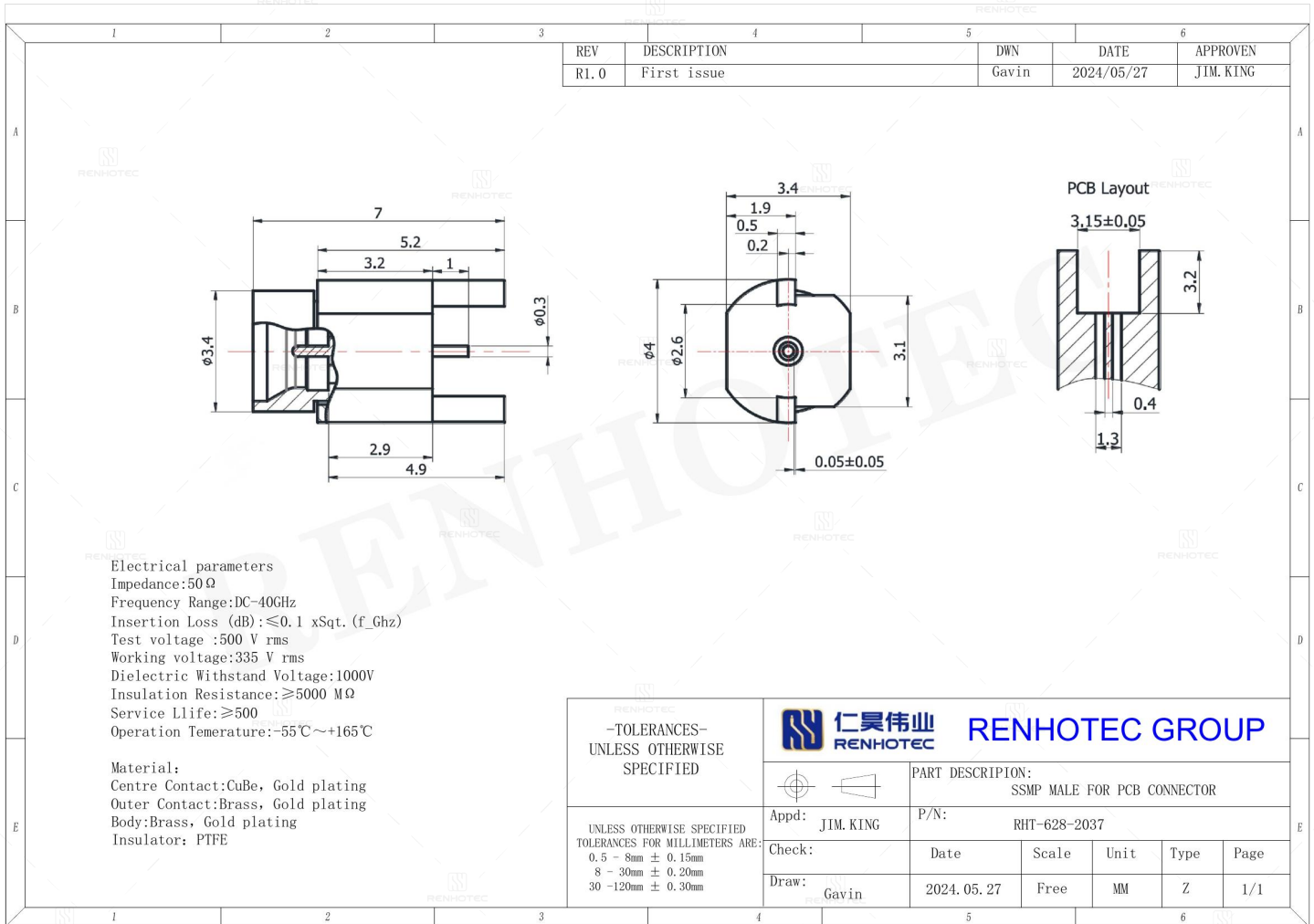


SSMP Male for PCB Connector - RHT-628-2037

Drawing



Basic Information

Connector Type	Plug
Mounting Type	Panel Mount
Orientation	Straight
RF Series	SSMP Type

Electrical Specification

Dielectric Withstanding Voltage	1000 V
Insertion Loss	≤ 0.1 * √f (GHz) dB
Test voltage	500 V

Mechanical Specification

Mating Cycles	500 Cycles mini
---------------	-----------------

Environmental Specification

Temperature Range	-55°C to +165°C
-------------------	-----------------

Material and Finish

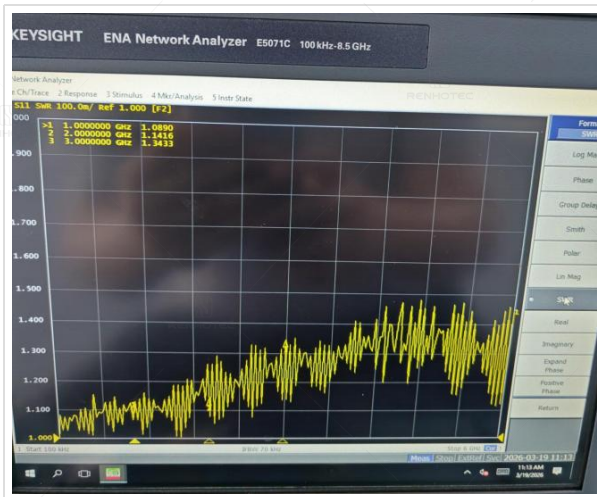
Component Description	Material	Finish
Outer Conductor	Brass	-
Outer Contact	-	Gold Plated
Insulator	PTFE	-
Contact	CuBe	Gold Plated
Center Contact	Brass	Gold Plated

Impedance Testing

Impedance	50 ohm
-----------	--------

Frequency & VSWR Test Report

Frequency Range	DC-40GHz
-----------------	----------



Contact Resistance Test

Contact Type

Male Pin



Working Voltage & Insulation Resistance Test

Working Voltage

335 V rms

Insulation Resistance

5000MΩ Min



Disclaimer

The information in this specification is subject to change without notice. Please confirm the latest version before use. Technical parameters are for reference only, and sufficient testing and verification should be conducted in actual applications.