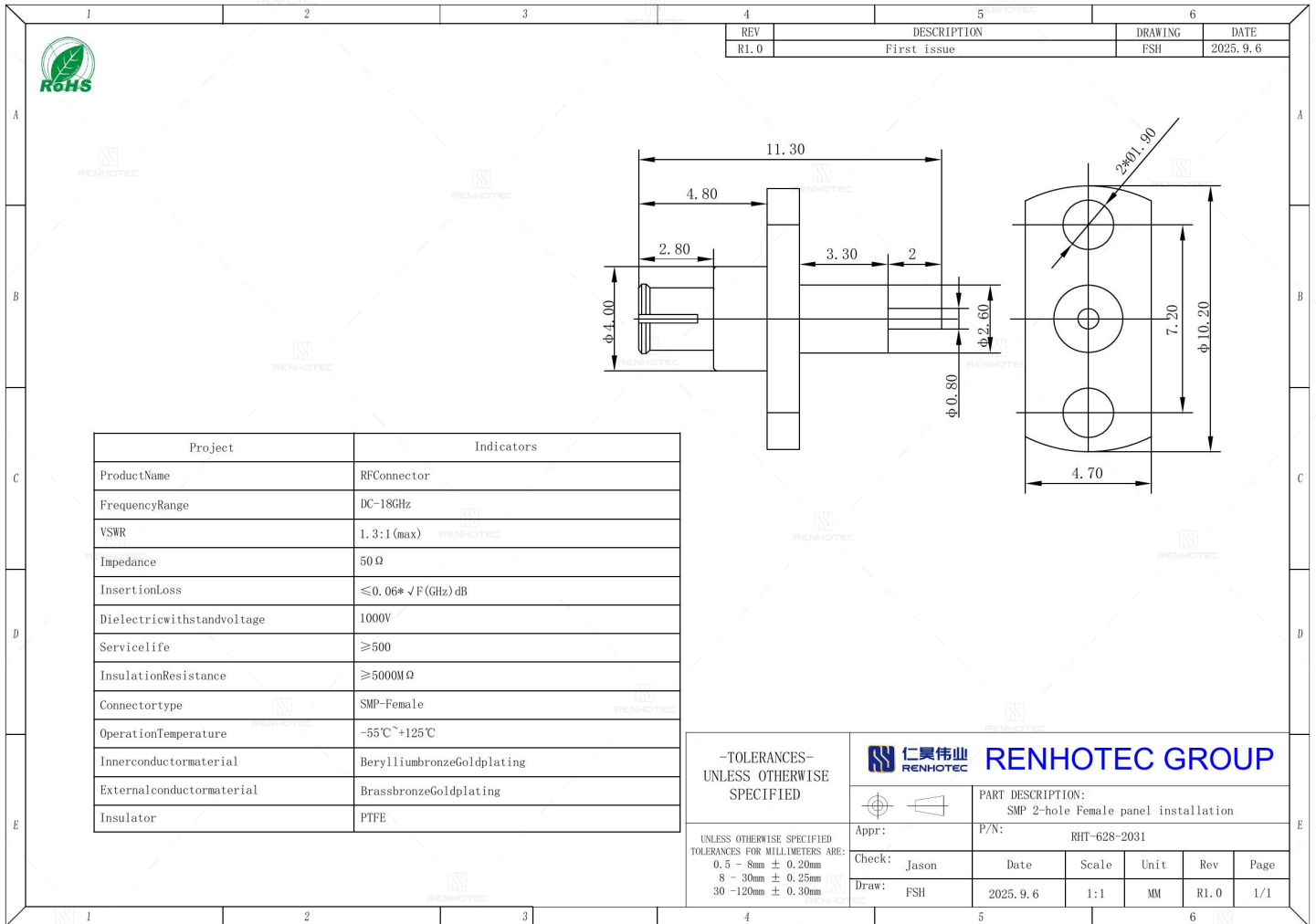


**SMP 2-Hole Flange Female Panel Installation - RHT-628-2032**

**Drawing**



**Basic Information**

<b>Connector Type</b>	Jack
<b>Mounting Feature</b>	Flange
<b>Mounting Type</b>	Panel Mount
<b>RF Series</b>	SMP Type

**Electrical Specification**

<b>Dielectric Withstanding Voltage</b>	1000 V
<b>Insertion Loss</b>	≤0.06*√F (GHz) dB

### Mechanical Specification

Mating Cycles	500 Cycles mini
---------------	-----------------

### Environmental Specification

Temperature Range	-55°C to +125°C
-------------------	-----------------

### Material and Finish

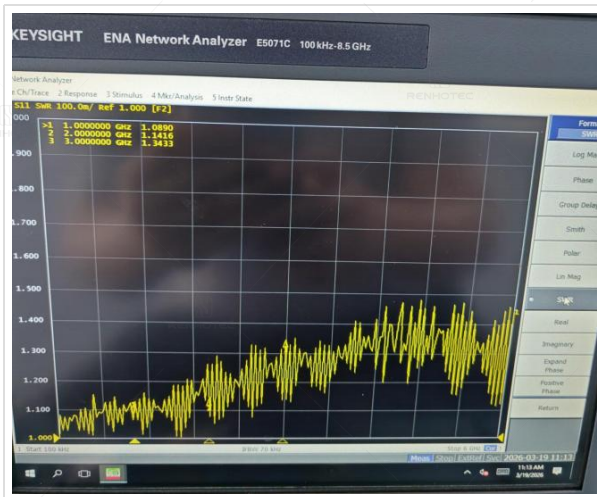
Component Description	Material	Finish
Outer Conductor	Brass Bronze	-
Outer Contact	-	Gold Plated
Insulator	PTFE	-
Contact	Beryllium Bronze	Gold Plated

### Impedance Testing

Impedance	50 ohm
-----------	--------

### Frequency & VSWR Test Report

Frequency Range	DC-18GHz
VSWR	1.3 MAX



**Contact Resistance Test**

Contact Type

Female Pin



**Working Voltage & Insulation Resistance Test**

Insulation Resistance

5000MΩ Min



**Disclaimer**

The information in this specification is subject to change without notice. Please confirm the latest version before use. Technical parameters are for reference only, and sufficient testing and verification should be conducted in actual applications.