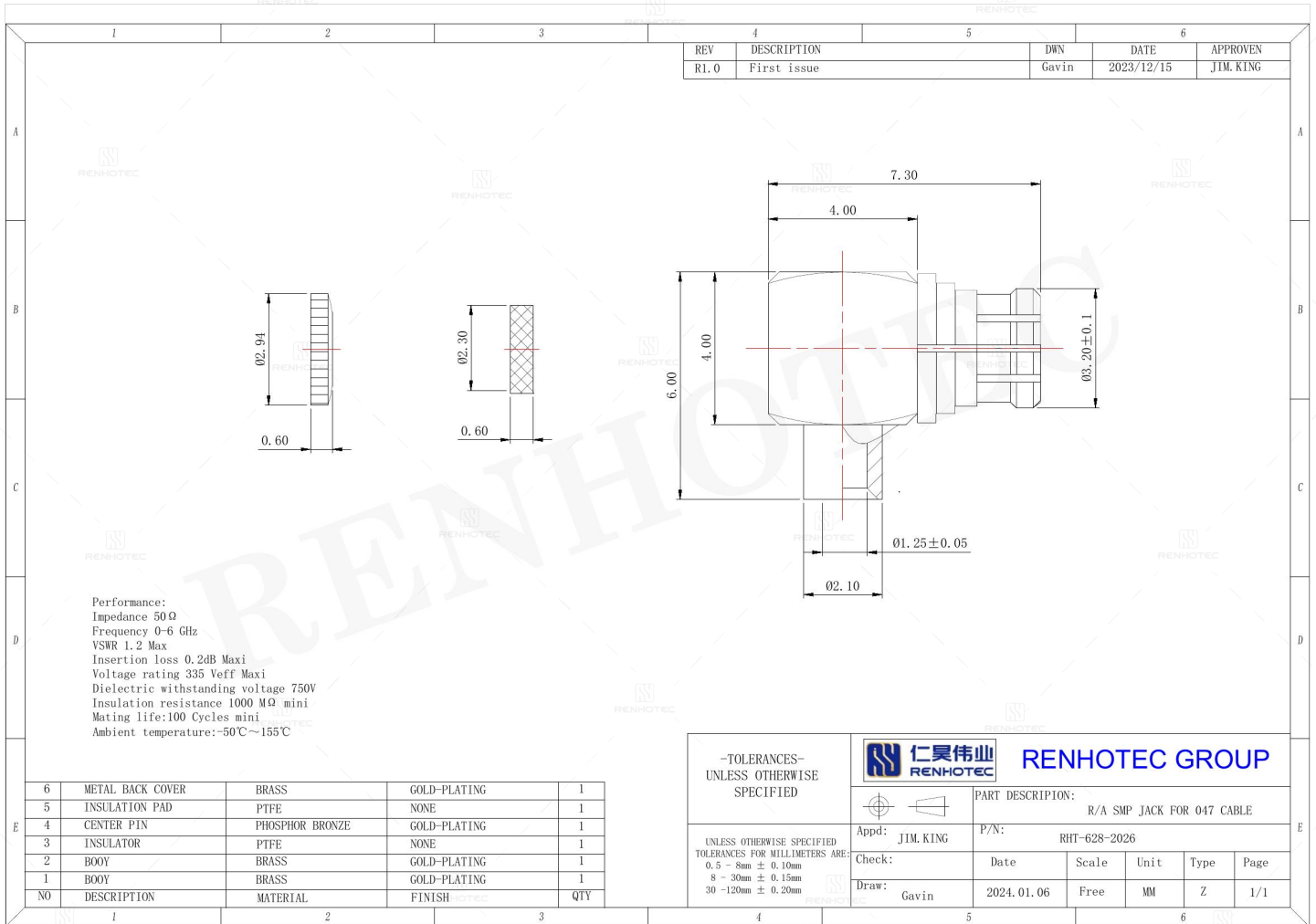


R/A SMP Jack for 047 Cable - RHT-628-2026

Drawing



Basic Information

Connector Type	Jack
Orientation	Right Angle
RF Series	SMP Type
Suitable Cable	047 Cable

Electrical Specification

Dielectric Withstanding Voltage	750 V
Insertion Loss	0.2dB Max

Mechanical Specification

Mating Cycles	100 Cycles mini
---------------	-----------------

Environmental Specification

Temperature Range	-50°C to +155°C
-------------------	-----------------

Material and Finish

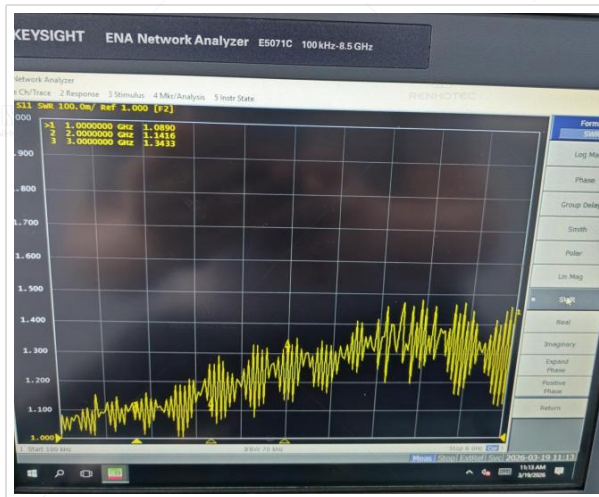
Component Description	Material	Finish
Metal Back Cover	Brass	Gold Plated
Insulator	PTFE	-
Contact	Phosphor Bronze	Gold Plated
Center Contact	Brass	Gold Plated

Impedance Testing

Impedance	50 ohm
-----------	--------

Frequency & VSWR Test Report

Frequency Range	0-6GHz
VSWR	1.2 MAX



Contact Resistance Test

Contact Type	Female Pin
--------------	------------



Working Voltage & Insulation Resistance Test

Working Voltage	335 V rms
Insulation Resistance	1000MΩ Min



Disclaimer

The information in this specification is subject to change without notice. Please confirm the latest version before use. Technical parameters are for reference only, and sufficient testing and verification should be conducted in actual applications.