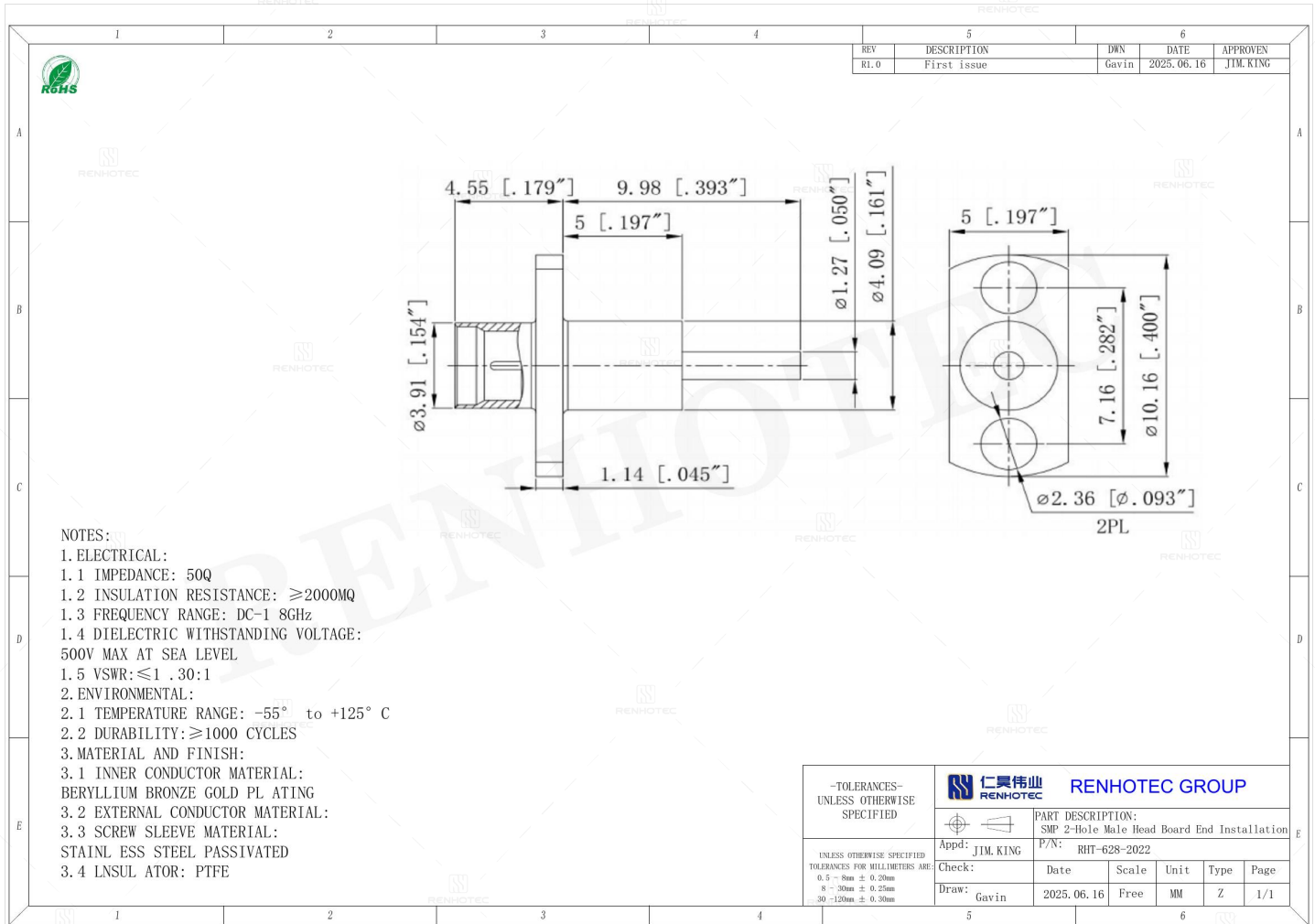


SMP 2-Hole Flange Male Head Board End Installation - RHT-628-2022

Drawing



Basic Information

Connector Type	Plug
Mounting Feature	Flange
Mounting Type	Panel Mount
Orientation	Straight
RF Series	SMP Type

Electrical Specification

Dielectric Withstanding Voltage	500 V
--	-------

Mechanical Specification

Mating Cycles 1000 Cycles mini

Environmental Specification

Temperature Range -55°C to +125°C

Material and Finish

Component Description	Material	Finish
Insulator	PTFE	-
Contact	Beryllium Bronze	Gold Plated
Shell	Stainless Steel	Passivation Plating

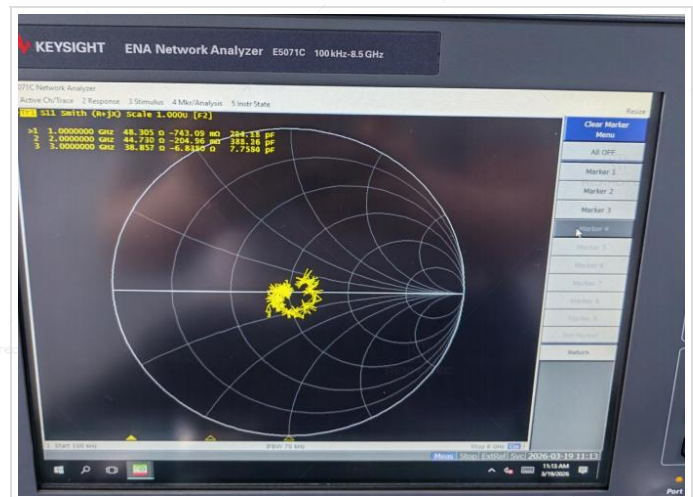
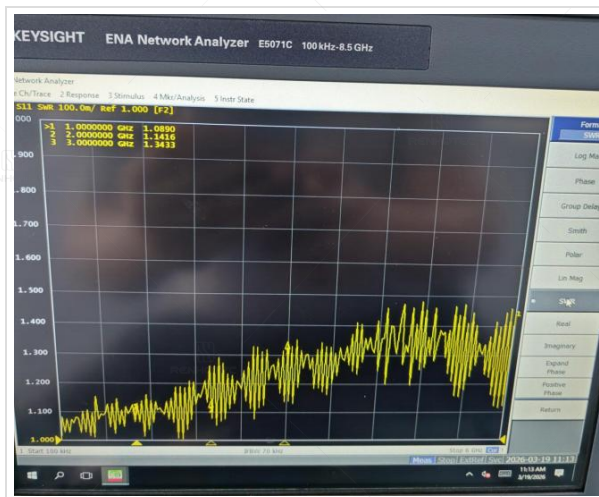
Impedance Testing

Impedance 50 ohm

Frequency & VSWR Test Report

Frequency Range DC-18GHz

VSWR 1.3 MAX



Contact Resistance Test

Contact Type

Male Pin



Working Voltage & Insulation Resistance Test

Insulation Resistance

2000MΩ



Disclaimer

The information in this specification is subject to change without notice. Please confirm the latest version before use. Technical parameters are for reference only, and sufficient testing and verification should be conducted in actual applications.