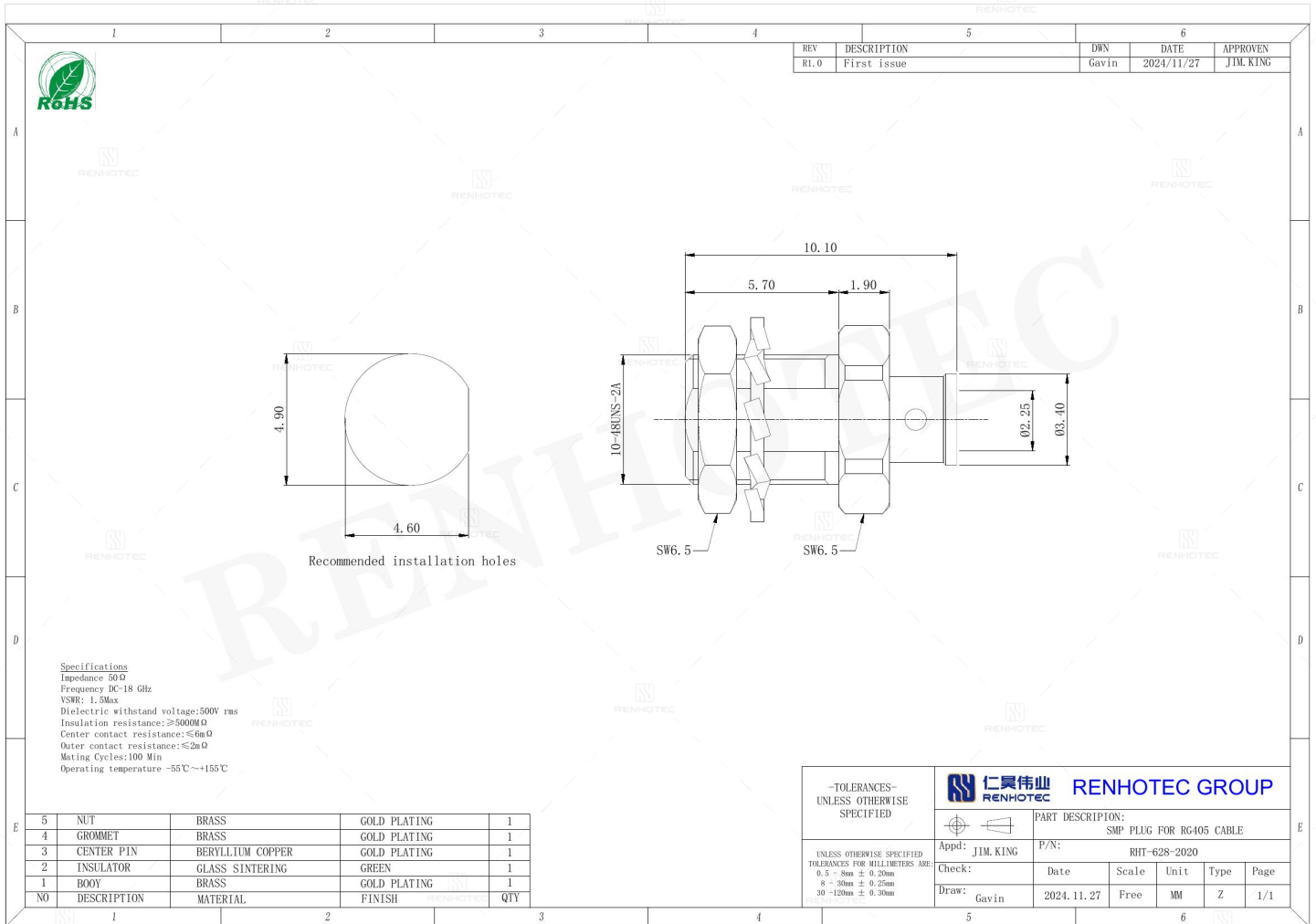


SMP Plug for RG405 Cable - RHT-628-2020

Drawing



Basic Information

Connector Type	Plug
Mounting Feature	Bulkhead
Mounting Type	Panel Mount
Orientation	Straight
RF Series	SMP Type
Suitable Cable	RG405

Electrical Specification

Dielectric Withstanding Voltage	500 V
Return loss	≥12 dB\, 18 to 100 GHz, ≥17 dB\, 40 to 70 GHz, ≥26 dB\, DC to 40 GHz

Mechanical Specification

Disengagement Force	4.5 lbf (20 N) min
Engagement Force	2.5 lbf (11 N) max
Mating Cycles	100 Cycles mini

Environmental Specification

Temperature Range	-55°C to +155°C
--------------------------	-----------------

Material and Finish

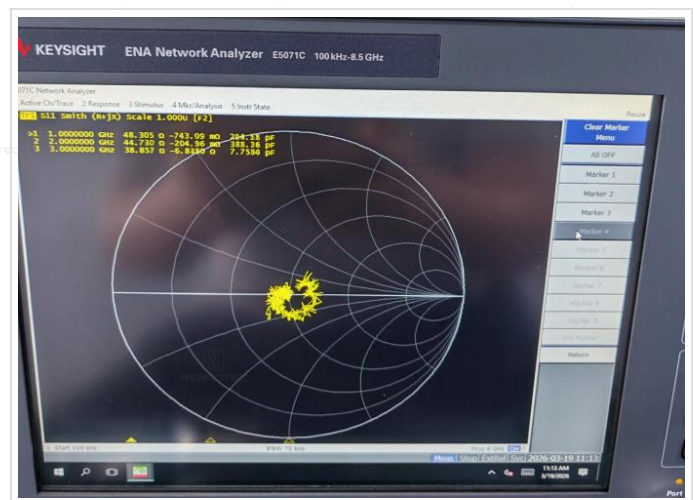
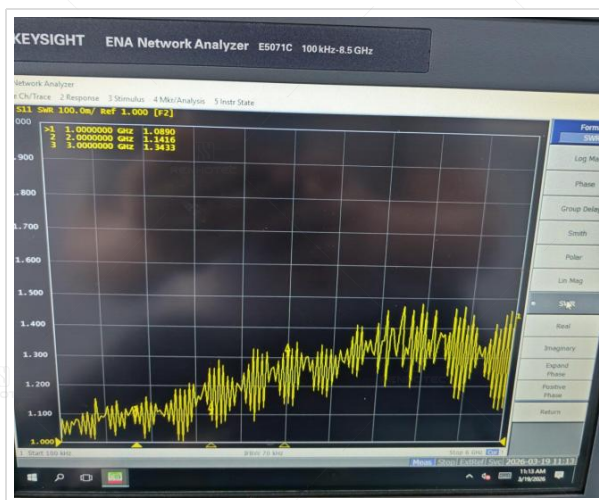
Component Description	Material	Finish
Nut	Brass	Gold Plated
Grommet	Brass	Gold Plated
Insulator	Glass Sintering	-
Contact	Beryllium Copper	Gold Plated
Center Contact	Beryllium Copper	Gold Plated

Impedance Testing

Impedance	50 ohm
------------------	--------

Frequency & VSWR Test Report

Frequency Range	DC-18GHz
VSWR	1.5 MAX



Contact Resistance Test

Contact Type	Male Pin
Center Contact Resistance	≤6mΩ
Outer Contact Resistance	≤2mΩ



Working Voltage & Insulation Resistance Test

Insulation Resistance	5000MΩ Min
-----------------------	------------



Disclaimer

The information in this specification is subject to change without notice. Please confirm the latest version before use. Technical parameters are for reference only, and sufficient testing and verification should be conducted in actual applications.