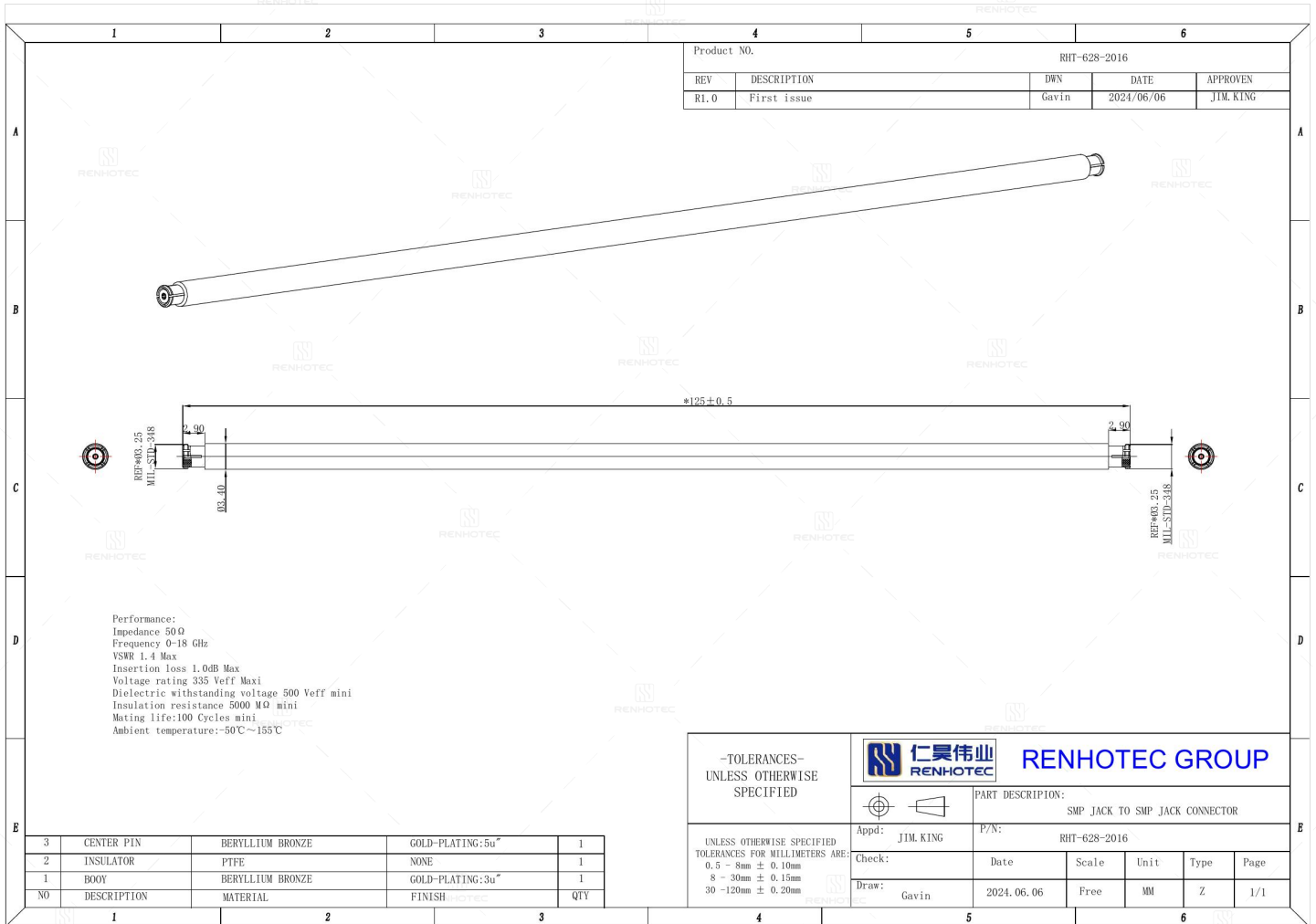


SMP Female to SMP Female Adapter - RHT-628-2016

Drawing



Basic Information

| | |
|--------------------------------|------------|
| 1st Connector | Jack |
| 1st Contact Type | Female Pin |
| 2nd Connector | Jack |
| 2nd Contact Type | Female Pin |
| Adapter Style | SMP to SMP |
| Convert From(Adapter 1) | SMP |
| Convert To(Adapter 2) | SMP |
| Orientation | Straight |

Electrical Specification

| | |
|--|-----------|
| Dielectric Withstanding Voltage | 500 V |
| Insertion Loss | 1.0dB MAX |

Mechanical Specification

| | |
|--------------------------|-----------------|
| Mating Durability | 100 Cycles mini |
|--------------------------|-----------------|

Environmental Specification

| | |
|--------------------------|-----------------|
| Temperature Range | -50°C to +155°C |
|--------------------------|-----------------|

Material and Finish

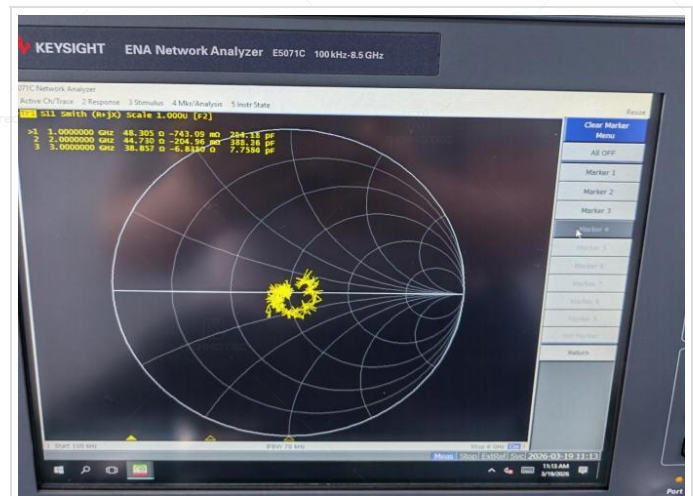
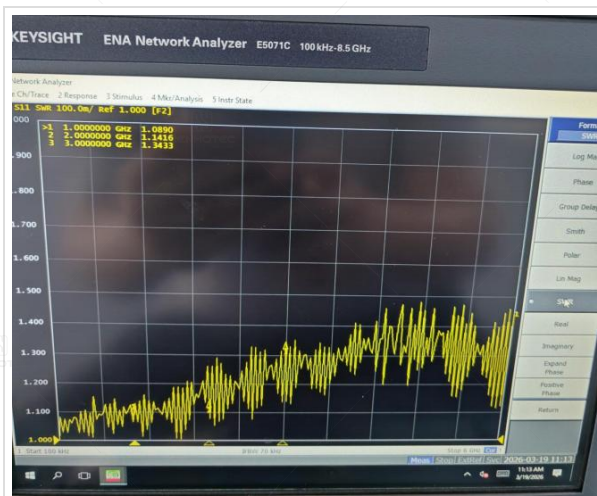
| Component Description | Material | Finish |
|-----------------------|------------------|-------------|
| Insulator | PTFE | - |
| Contact | Beryllium Copper | Gold Plated |
| Center Contact | - | Gold Plated |

Impedance Testing

| | |
|------------------|--------|
| Impedance | 50 ohm |
|------------------|--------|

Frequency & VSWR Test Report

| | |
|------------------------|---------|
| Frequency Range | 0-18GHz |
| VSWR | 1.4 MAX |



Contact Resistance Test



Working Voltage & Insulation Resistance Test

| | |
|-----------------------|------------|
| Working Voltage | 335 V rms |
| Insulation Resistance | 5000MΩ Min |



Disclaimer

The information in this specification is subject to change without notice. Please confirm the latest version before use. Technical parameters are for reference only, and sufficient testing and verification should be conducted in actual applications.