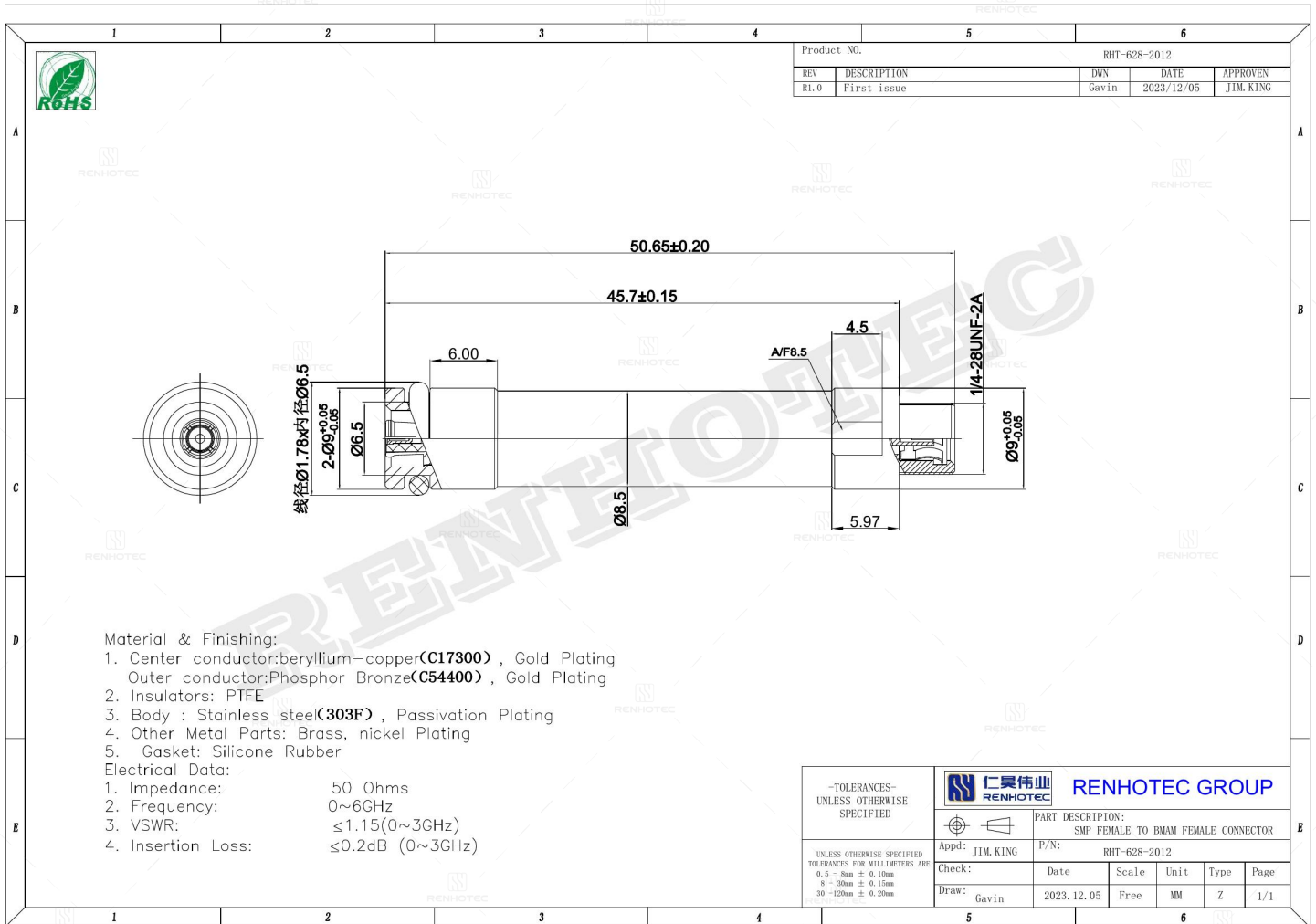


**SMP Female to BMAM Female Adapter - RHT-628-2012**

**Drawing**



**Basic Information**

<b>1st Connector</b>	Jack
<b>1st Contact Type</b>	Female Pin
<b>2nd Connector</b>	Jack
<b>2nd Contact Type</b>	Female Pin
<b>Adapter Style</b>	SMP to BMAM
<b>Convert From(Adapter 1)</b>	SMP
<b>Convert To(Adapter 2)</b>	BMAM
<b>Orientation</b>	Straight

### Electrical Specification

Insertion Loss	0.2dB Max (0-3GHz)
----------------	--------------------

### Material and Finish

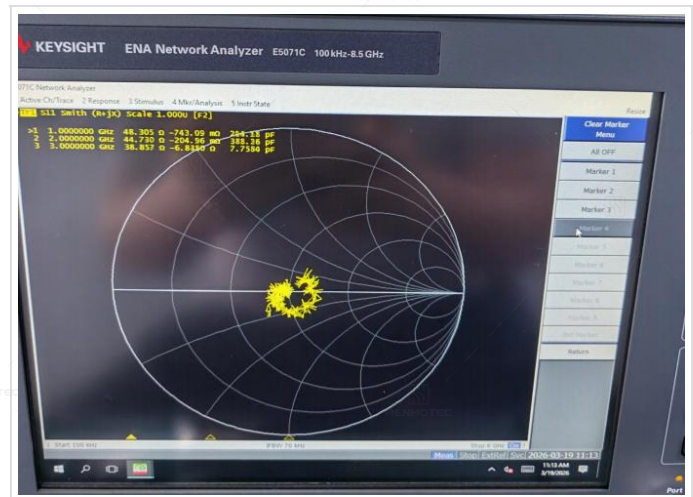
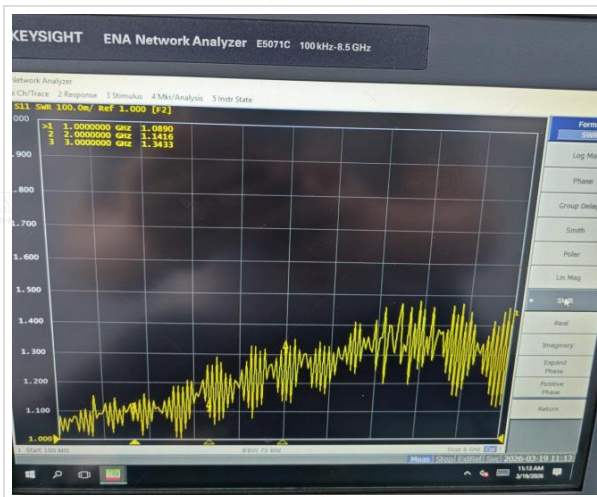
Component Description	Material	Finish
Outer Conductor	Phosphor Bronze	-
Outer Contact	-	Gold Plated
Insulator	PTFE	-
Contact	Beryllium Copper	Gold Plated
Center Contact	-	Passivation Plating
Shell	Stainless Steel	-

### Impedance Testing

Impedance	50 ohm
-----------	--------

### Frequency & VSWR Test Report

Frequency Range	0-6GHz
VSWR	1.15 Max (0-3GHz)



### Contact Resistance Test



### Working Voltage & Insulation Resistance Test



### Disclaimer

The information in this specification is subject to change without notice. Please confirm the latest version before use. Technical parameters are for reference only, and sufficient testing and verification should be conducted in actual applications.