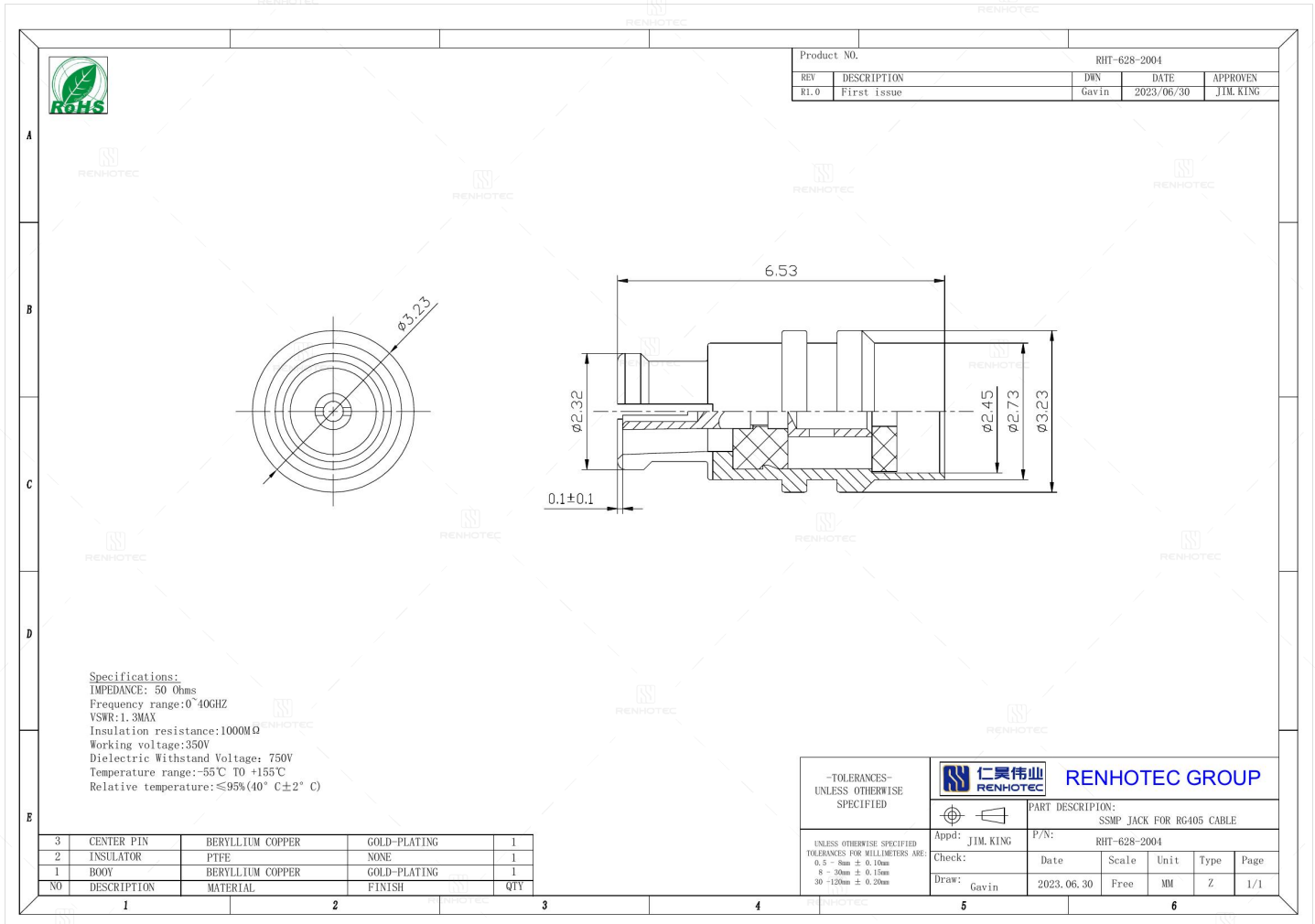


SSMP Jack for RG405 Cable - RHT-628-2004

Drawing



Basic Information

Connector Type	Jack
Orientation	Straight
RF Series	SSMP Type
Suitable Cable	RG405

Electrical Specification

Dielectric Withstanding Voltage	750 V
--	-------

Environmental Specification

Temperature Range	-55°C to +155°C
--------------------------	-----------------

Material and Finish

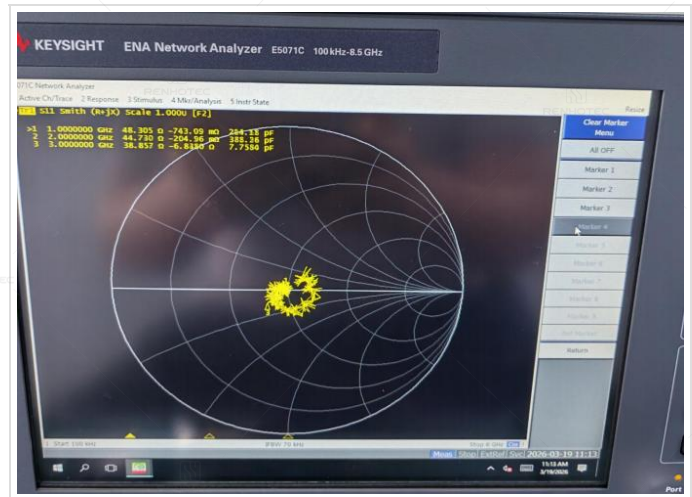
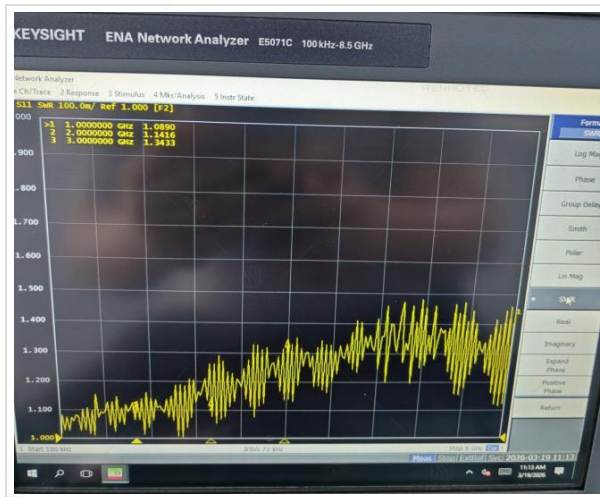
Component Description	Material	Finish
Insulator	PTFE	-
Contact	Beryllium Copper	Gold Plated
Center Contact	Beryllium Copper	Gold Plated

Impedance Testing

Impedance	50 ohm
-----------	--------

Frequency & VSWR Test Report

Frequency Range	0-40GHz
VSWR	1.3 MAX



Contact Resistance Test

Contact Type	Female Pin
--------------	------------



Working Voltage & Insulation Resistance Test

Working Voltage	335 V rms
Insulation Resistance	1000MΩ Min



Disclaimer

The information in this specification is subject to change without notice. Please confirm the latest version before use. Technical parameters are for reference only, and sufficient testing and verification should be conducted in actual applications.