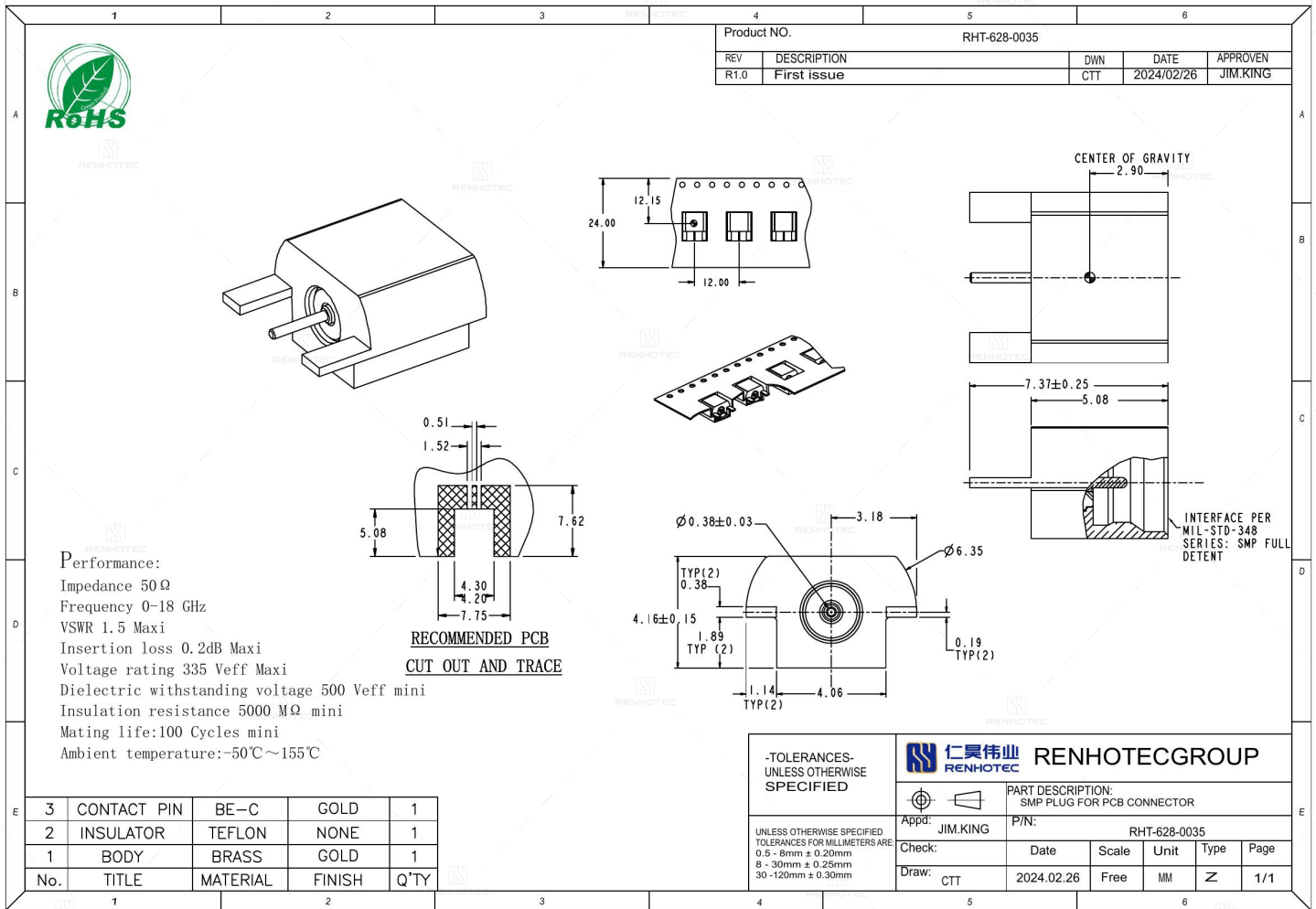


SMP Plug for PCB Connector - RHT-628-0035

Drawing



Basic Information

| | |
|-----------------------|-------------|
| Connector Type | Plug |
| Mounting Type | Panel Mount |
| Orientation | Straight |
| RF Series | SMP Type |

Electrical Specification

| | |
|--|-----------|
| Dielectric Withstanding Voltage | 500 V |
| Insertion Loss | 0.2dB Max |

Mechanical Specification

Mating Cycles 100 Cycles mini

Environmental Specification

Temperature Range -50°C to +155°C

Material and Finish

| Component Description | Material | Finish |
|-----------------------|----------|-------------|
| Insulator | TEFLON | - |
| Contact | BE-C | Gold Plated |
| Center Contact | Brass | Gold Plated |

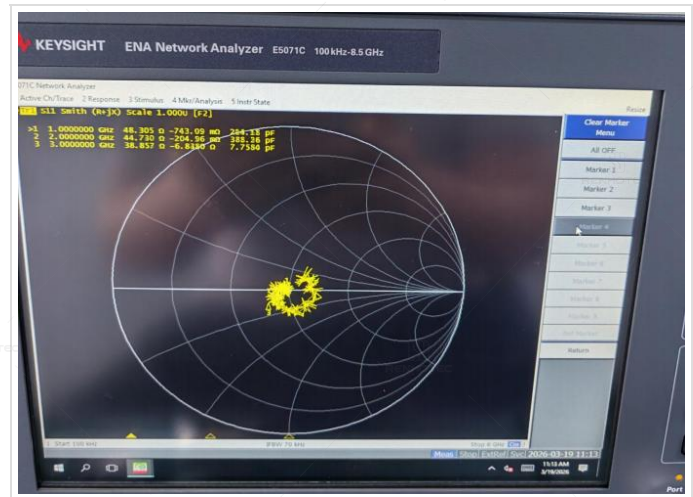
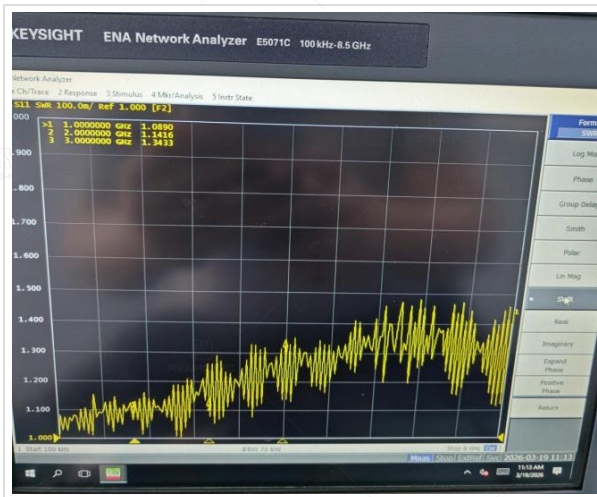
Impedance Testing

Impedance 50 ohm

Frequency & VSWR Test Report

Frequency Range 0-18GHz

VSWR 1.5 MAX



Contact Resistance Test

Contact Type

Male Pin



Working Voltage & Insulation Resistance Test

Working Voltage

335 V rms

Insulation Resistance

5000MΩ Min



Disclaimer

The information in this specification is subject to change without notice. Please confirm the latest version before use. Technical parameters are for reference only, and sufficient testing and verification should be conducted in actual applications.