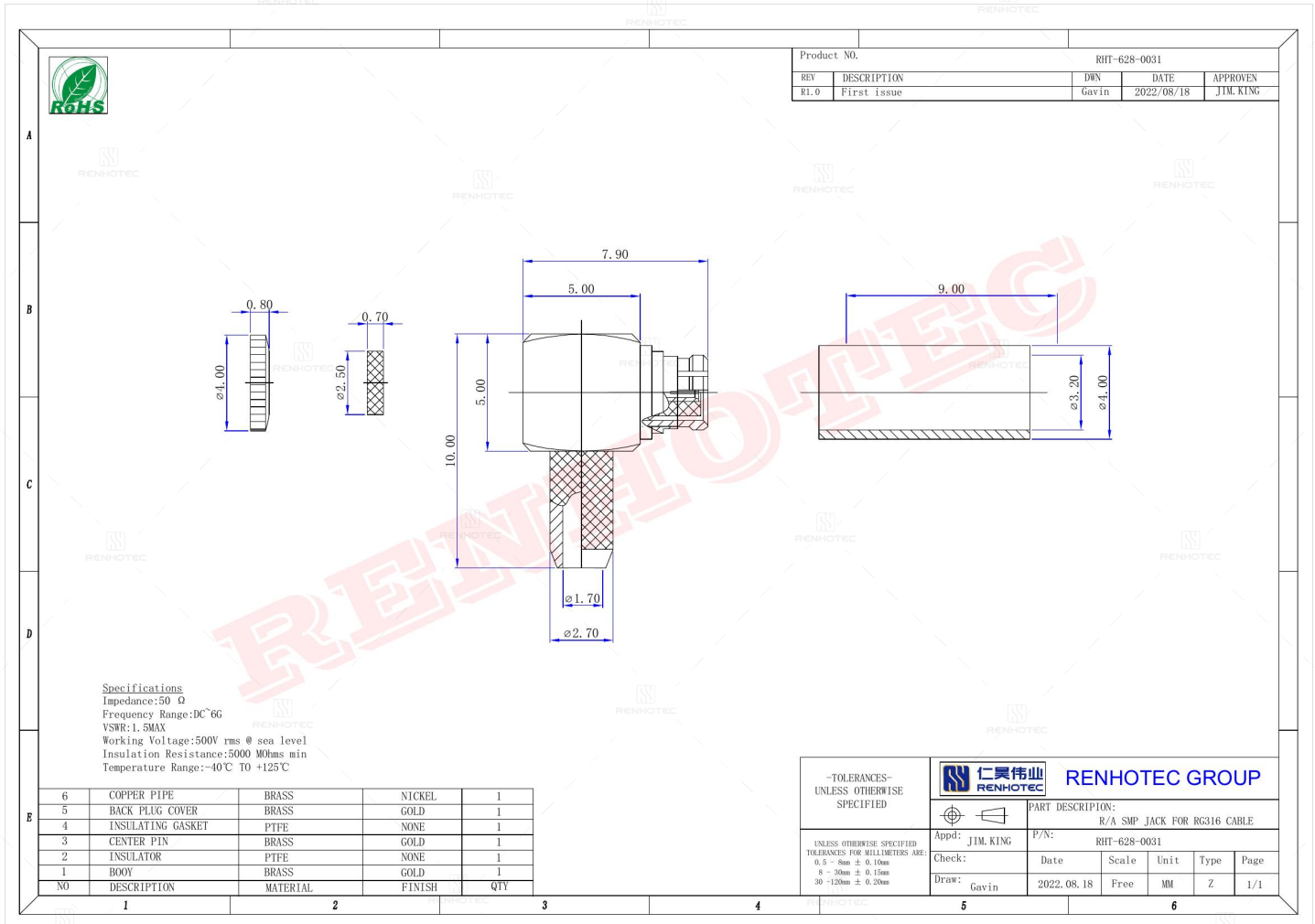


**R/A SMP Jack for RG316 Cable - RHT-628-0031**

**Drawing**



**Basic Information**

<b>Connector Type</b>	Jack
<b>Orientation</b>	Right Angle
<b>RF Series</b>	SMP Type
<b>Suitable Cable</b>	RG316

**Environmental Specification**

<b>Temperature Range</b>	-40°C to +125°C
--------------------------	-----------------

### Material and Finish

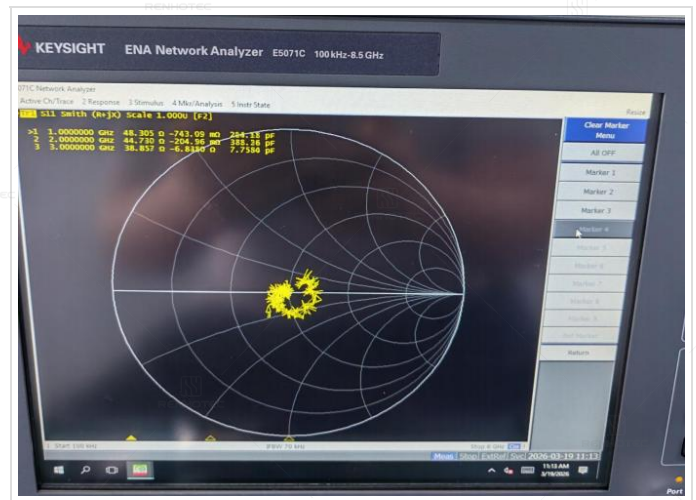
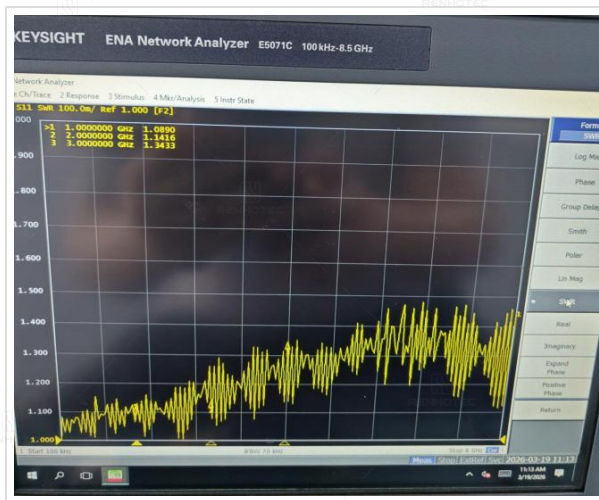
Component Description	Material	Finish
Back Plug	Brass	Gold Plated
Copper Pipe	Brass	Nickel Plated
Insulator	PTFE	-
Contact	Brass	Gold Plated
Center Contact	Brass	Gold Plated

### Impedance Testing

Impedance	50 ohm
-----------	--------

### Frequency & VSWR Test Report

Frequency Range	DC-6GHz
VSWR	1.5 MAX



**Contact Resistance Test**

Contact Type	Female Pin
--------------	------------



**Working Voltage & Insulation Resistance Test**

Working Voltage	500 V rms
Insulation Resistance	5000MΩ Min



**Disclaimer**

The information in this specification is subject to change without notice. Please confirm the latest version before use. Technical parameters are for reference only, and sufficient testing and verification should be conducted in actual applications.