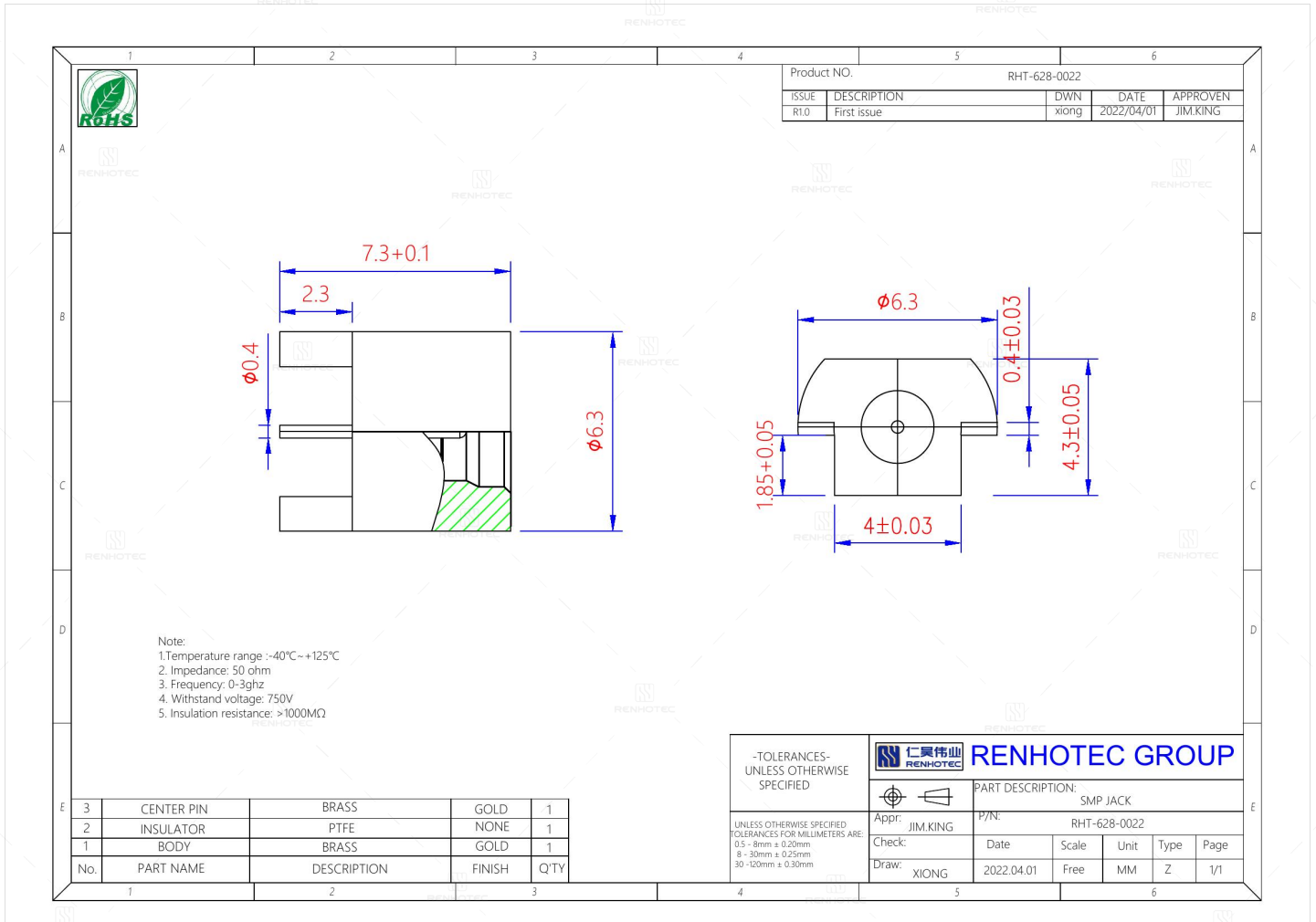


SMP Jack - RHT-628-0022

Drawing



Basic Information

Connector Type	Jack
Orientation	Straight
RF Series	SMP Type

Electrical Specification

Dielectric Withstanding Voltage	750 V
--	-------

Environmental Specification

Temperature Range	-40°C to +125°C
--------------------------	-----------------

Material and Finish

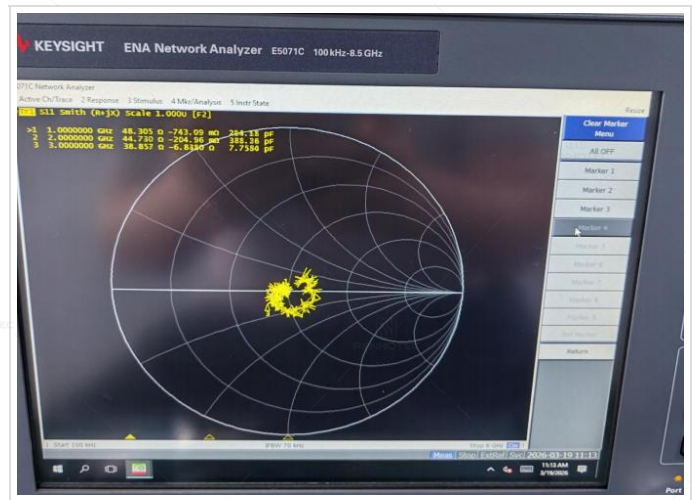
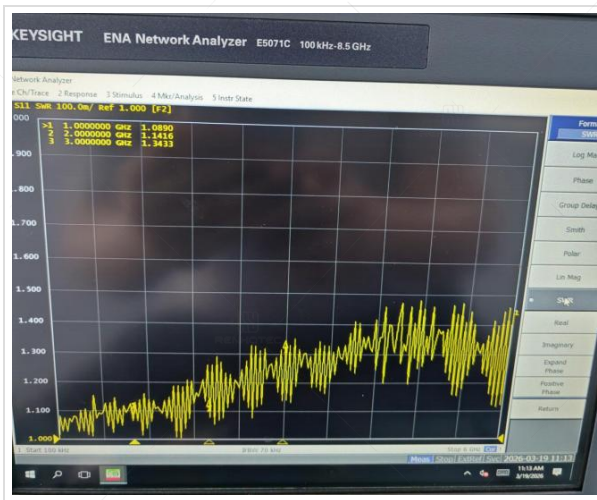
Component Description	Material	Finish
Insulator	PTFE	-
Contact	Brass	Gold Plated
Center Contact	Brass	Gold Plated

Impedance Testing

Impedance	50 ohm
-----------	--------

Frequency & VSWR Test Report

Frequency Range	0-3GHz
-----------------	--------



Contact Resistance Test

Contact Type	Female Pin
--------------	------------



Working Voltage & Insulation Resistance Test

Insulation Resistance

1000MΩ Min



Disclaimer

The information in this specification is subject to change without notice. Please confirm the latest version before use. Technical parameters are for reference only, and sufficient testing and verification should be conducted in actual applications.