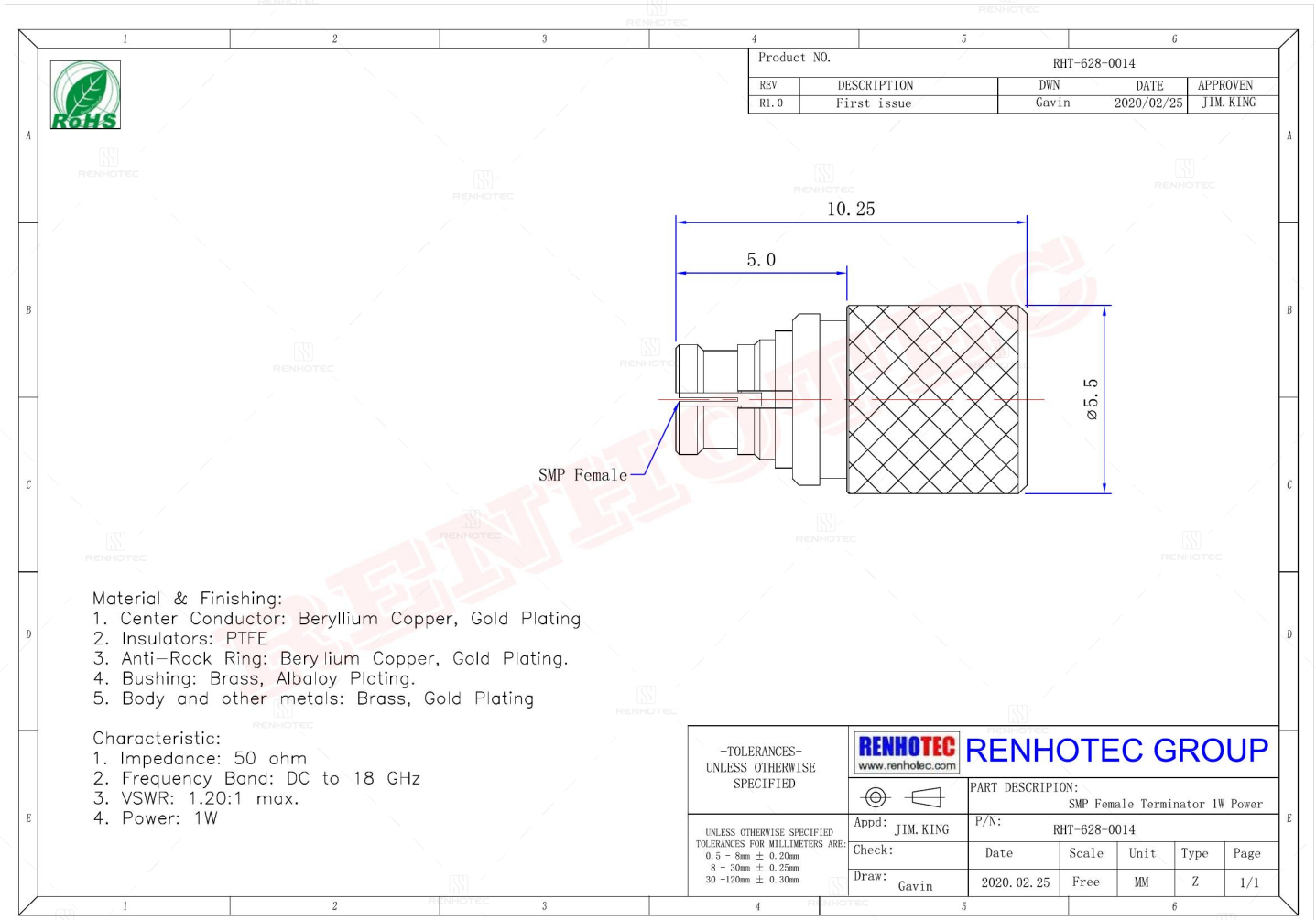


SMP Female Terminator 1w Power - RHT-628-0014

Drawing



Basic Information

Connector Type	Jack
Orientation	Straight

Material and Finish

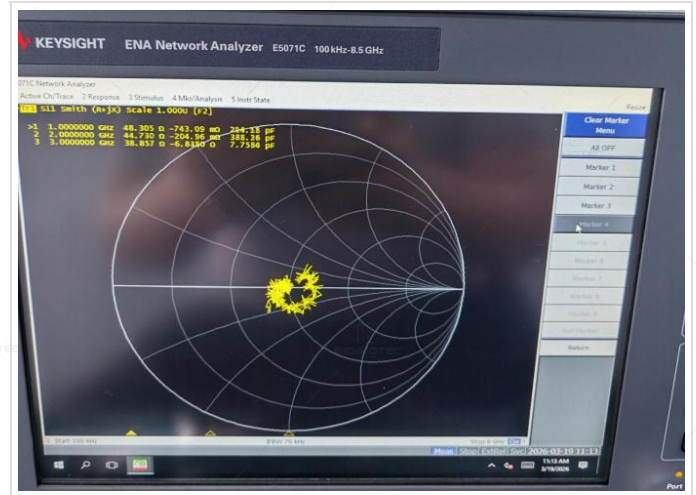
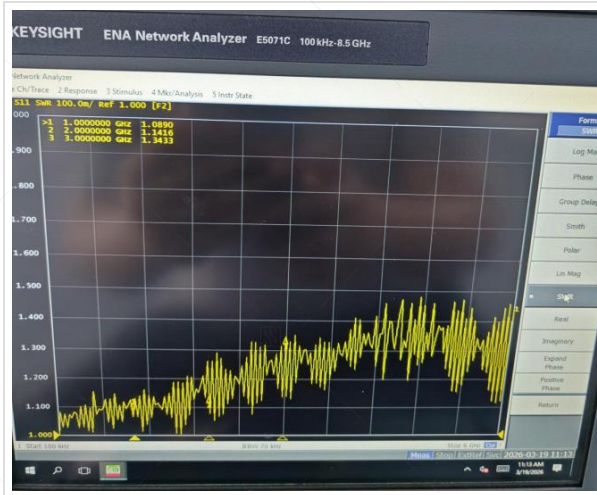
Component Description	Material	Finish
Anti-Rock Ring	Beryllium Copper	Gold Plated
Insulator	PTFE	-
Contact	Beryllium Copper	Gold Plated
Center Contact	Brass	Gold Plated

Impedance Testing

Impedance	50 ohm
-----------	--------

Frequency & VSWR Test Report

Frequency Range	DC-18GHz
VSWR	1.2 MAX



Contact Resistance Test

Contact Type	Female Pin
--------------	------------



Working Voltage & Insulation Resistance Test



Disclaimer

The information in this specification is subject to change without notice. Please confirm the latest version before use. Technical parameters are for reference only, and sufficient testing and verification should be conducted in actual applications.