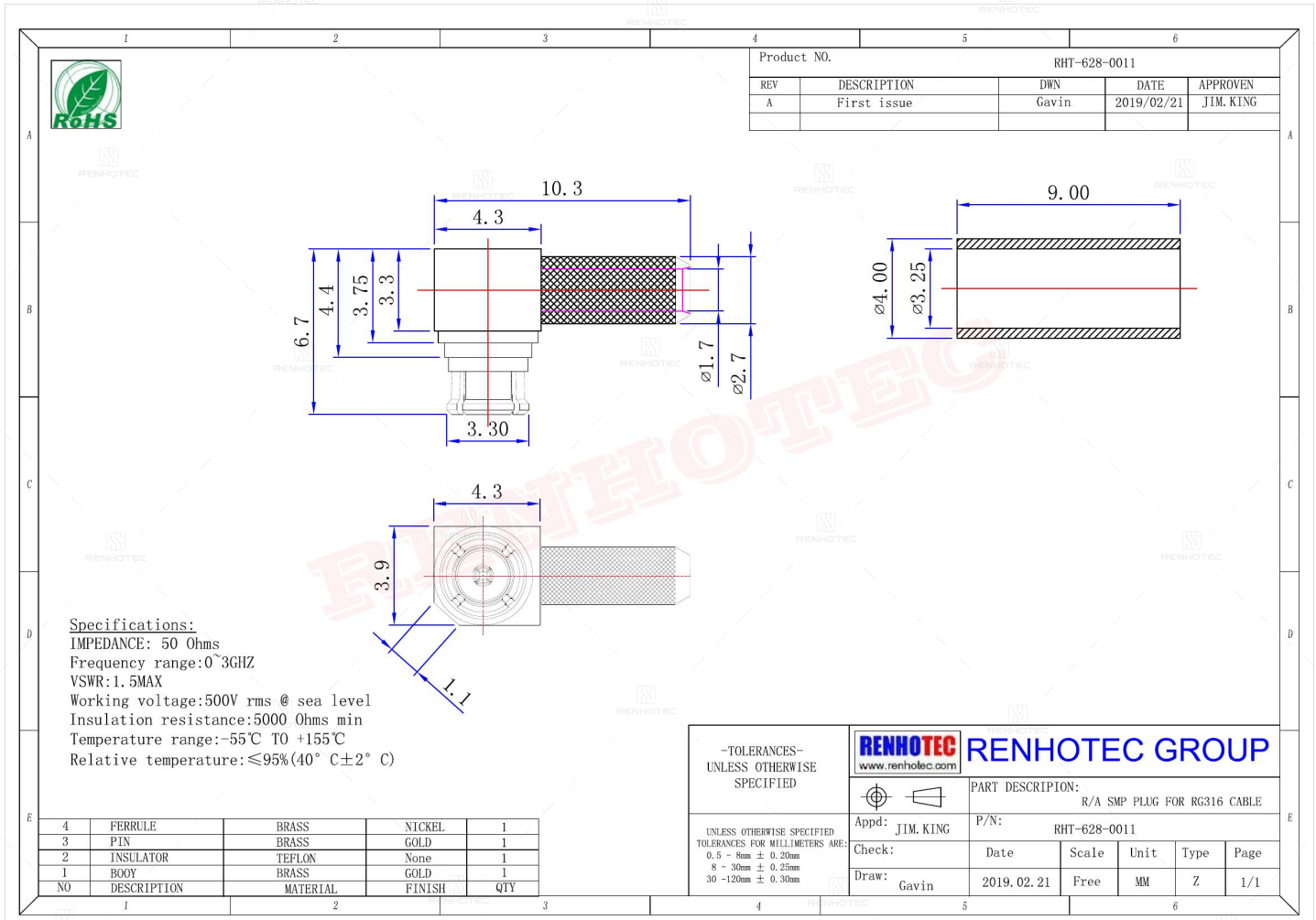


R/A SMP Plug for RG316 Cable - RHT-628-0011

Drawing



Basic Information

Connector Type	Plug
Orientation	Right Angle
RF Series	SMP Type
Suitable Cable	RG316

Environmental Specification

Temperature Range	-55°C to +155°C
--------------------------	-----------------

Material and Finish

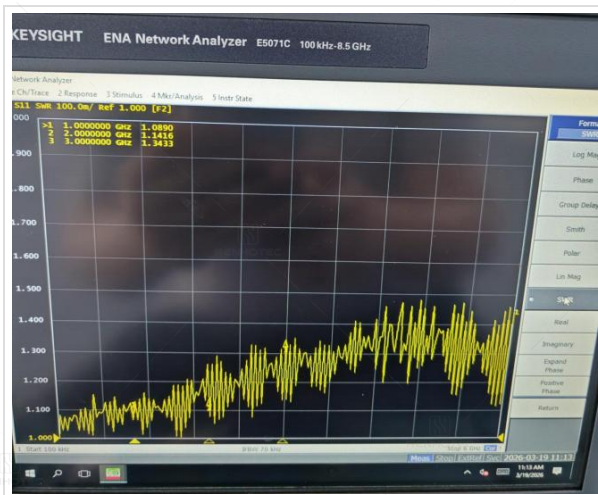
Component Description	Material	Finish
Ferrule	Brass	Nickel Plated
Insulator	TEFLON	-
Contact	Brass	Gold Plated
Center Contact	Brass	Gold Plated

Impedance Testing

Impedance	50 ohm
-----------	--------

Frequency & VSWR Test Report

Frequency Range	0-3GHz
VSWR	1.5 MAX



Contact Resistance Test

Contact Type

Male Pin



Working Voltage & Insulation Resistance Test

Working Voltage

500 V rms

Insulation Resistance

5000 Ohms min



Disclaimer

The information in this specification is subject to change without notice. Please confirm the latest version before use. Technical parameters are for reference only, and sufficient testing and verification should be conducted in actual applications.