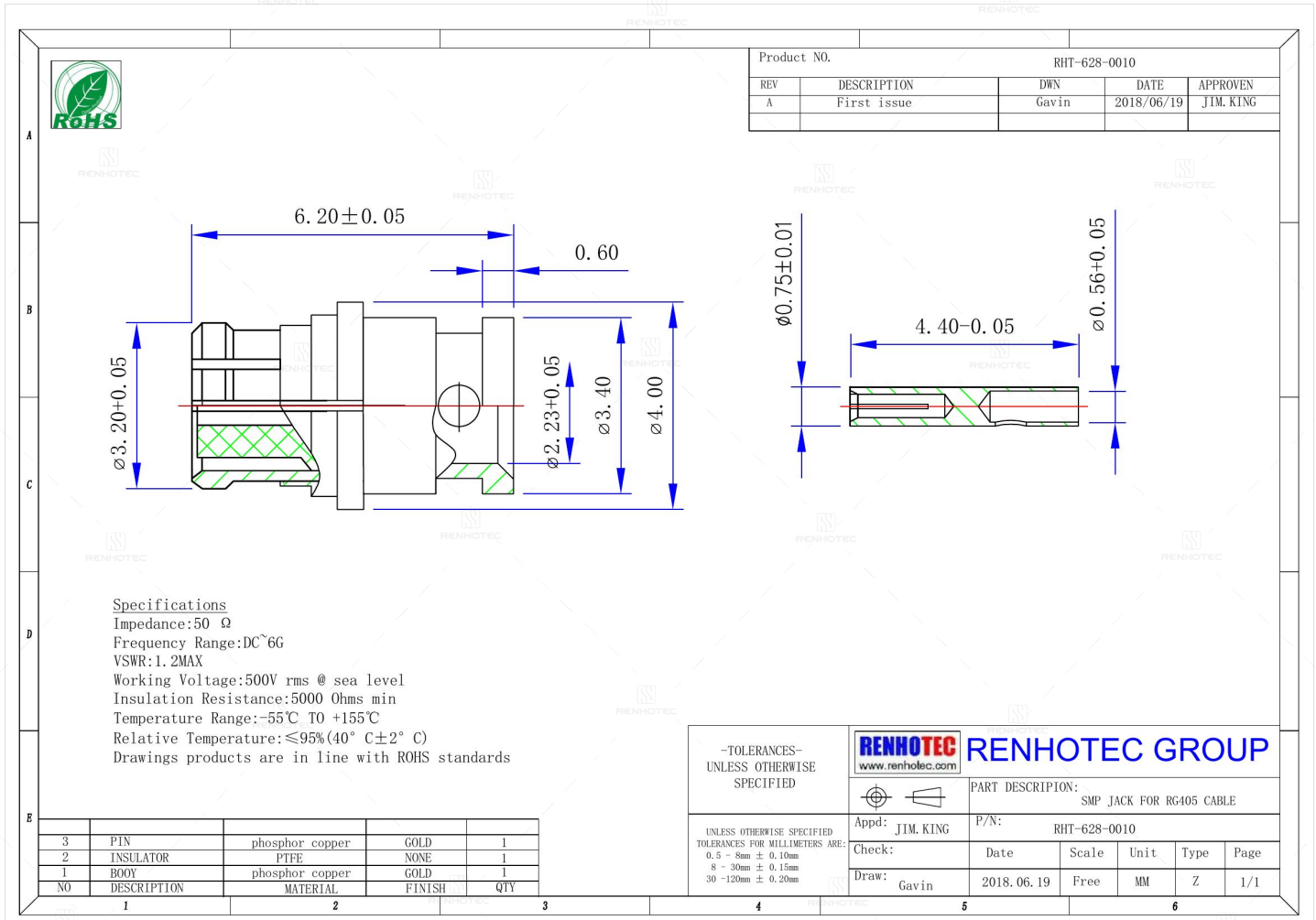


R/A SMP Jack for RG405 Cable - RHT-628-0010

Drawing



Basic Information

Connector Type	Jack
Orientation	Straight
RF Series	SMP Type
Suitable Cable	RG405

Environmental Specification

Temperature Range	-55°C to +155°C
--------------------------	-----------------

Material and Finish

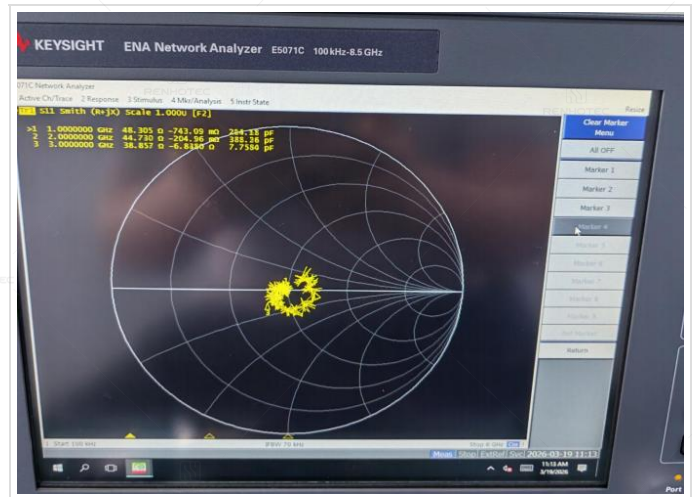
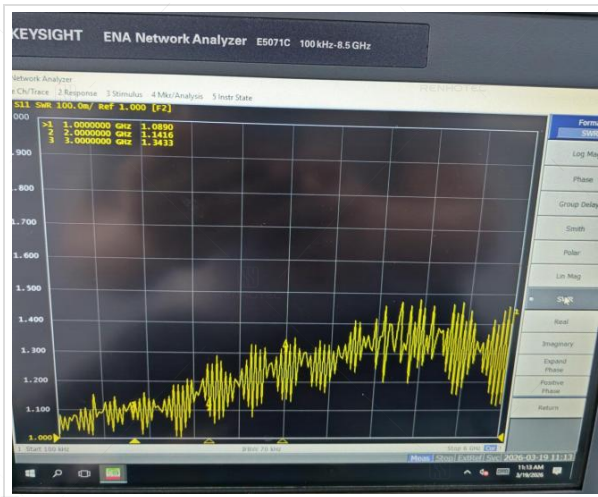
Component Description	Material	Finish
Insulator	PTFE	-
Contact	Phosphor copper	Gold Plated
Center Contact	-	Gold Plated

Impedance Testing

Impedance	50 ohm
-----------	--------

Frequency & VSWR Test Report

Frequency Range	DC-6GHz
VSWR	1.2 MAX



Contact Resistance Test

Contact Type	Female Pin
--------------	------------



Working Voltage & Insulation Resistance Test

Working Voltage	500 V rms
Insulation Resistance	5000 Ohms min



Disclaimer

The information in this specification is subject to change without notice. Please confirm the latest version before use. Technical parameters are for reference only, and sufficient testing and verification should be conducted in actual applications.