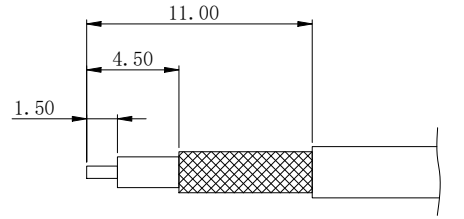
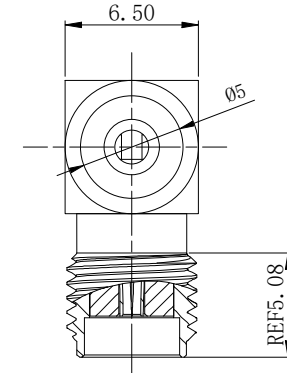
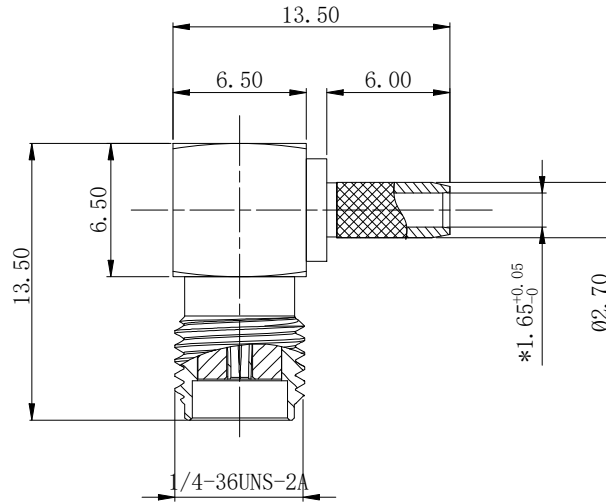
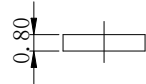
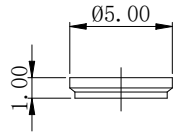
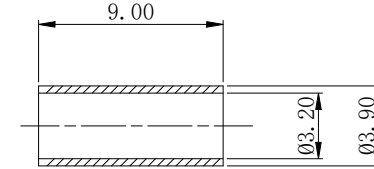




REV	DESCRIPTION	DWN	DATE	APPROVEN
R1.0	First issue	Gavin	2024/11/22	JIM.KING
R1.1	variation of parameters	Li	2026/02/04	Jason



建议剥线尺寸



Specifications:

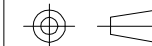
IMPEDANCE: 50 Ohms
 Frequency range: 0~6GHZ
 VSWR: 1.5MAX
 Voltage Rating: 335 Volts RMS Continuous
 Dielectric withstand voltage: 1000 V
 Service life: ≥500
 Insulation Resistance ≥5000MΩ
 Center contact resistance: ≤3mΩ
 Outer contact resistance: ≤2mΩ
 Operation Temperature: -55°C ~ +165°C

6	COPPER TUBE	BRASS	NICKEL PLATED	1
5	BACK COVER	BRASS	GOLD PLATED	1
4	INSULATING GASKET	PTFE	NATURE	1
3	CENTER PIN	BRASS	GOLD PLATED	1
2	INSULATOR	PTFE	NATURE	1
1	BODY	BRASS	GOLD PLATED	1
NO	DESCRIPTION	MATERIAL	FINISH	QTY

-TOLERANCES-
UNLESS OTHERWISE
SPECIFIED



RENHOTEC GROUP



PART DESCRIPTION:
SMA JACK FOR RG316 CABLE

UNLESS OTHERWISE SPECIFIED
TOLERANCES FOR MILLIMETERS ARE:
0.5 - 8mm ± 0.10mm
8 - 30mm ± 0.15mm
30 - 120mm ± 0.20mm

Appr:	RHT-612-6080				
Check: Jason	Date	Scale	Unit	Type	Page
Draw: Li	2026.02.04	Free	MM	Z	1/1