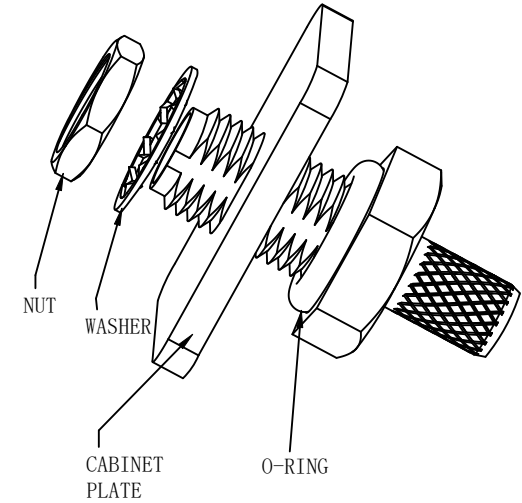
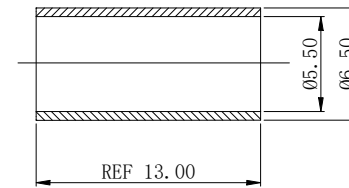
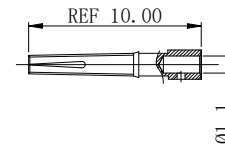
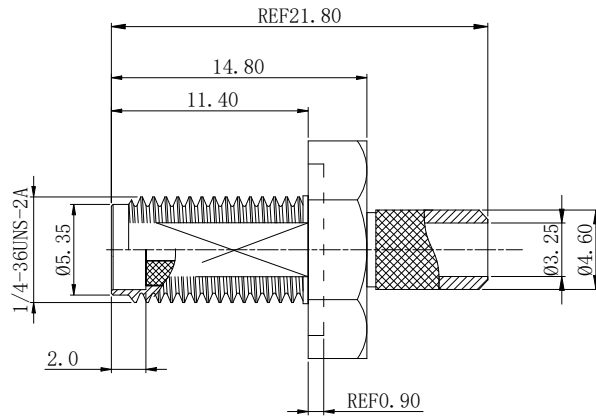
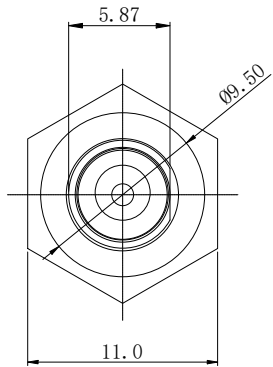




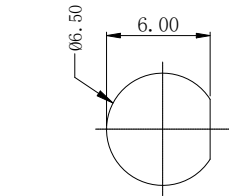
| REV | DESCRIPTION | DWN | DATE | APPROVEN |
|------|------------------------------------|-------|------------|----------|
| R1.0 | First issue | Gavin | 2024/01/30 | JIM.KING |
| R1.1 | Add the assembly schematic diagram | Li | 2026/01/31 | Jason |



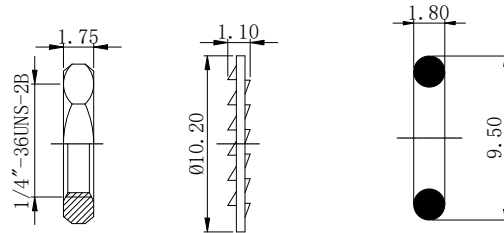
Assembly drawing

Specifications:

- IMPEDANCE: 50 Ohms
- Frequency range: 0~6GHZ
- VSWR: 1.5MAX
- Voltage Rating: 335 Volts RMS Continuous
- Dielectric withstand voltage: 1000 V
- Service life: ≥500
- Insulation Resistance ≥5000MΩ
- Center contact resistance: ≤3mΩ
- Outer contact resistance: ≤2mΩ
- Operation Temperature: -55℃ ~ +165℃
- Waterproof Range: IP67, Mated



Recommended hole opening size
(chassis board thickness: 1.2 ~ 3.0 mm)



| | | | | |
|----|----------------|----------|--------|-----|
| 7 | COPPER TUBE | BRASS | NICKEL | 1 |
| 6 | NUT | BRASS | GOLD | 1 |
| 5 | WASHER | IRON | GLD | 1 |
| 4 | O-RING | RUBBER | RED | 1 |
| 3 | CENTER CONTACT | BRASS | GOLD | 1 |
| 2 | INSULATOR | PTFE | NATURE | 1 |
| 1 | BODY | BRASS | GOLD | 1 |
| NO | DESCRIPTION | MATERIAL | FINISH | QTY |

| | | | | | | |
|---|--------------|-------------------|--|------|------|------|
| -TOLERANCES- UNLESS OTHERWISE SPECIFIED | | | RENHOTEC GROUP | | | |
| | | | PART DESCRIPTION: WATERPROOF SMA JACK FOR RG58/LMR195 CABLE | | | |
| UNLESS OTHERWISE SPECIFIED TOLERANCES FOR MILLIMETERS ARE: 0.5 - 8mm ± 0.20mm 8 - 30mm ± 0.25mm 30 - 120mm ± 0.30mm | Appd: | P/N: RHT-612-6025 | | | | |
| | Check: Jason | Date | Scale | Unit | Type | Page |
| | Draw: Li | 2026.01.31 | Free | MM | Z | 1/1 |