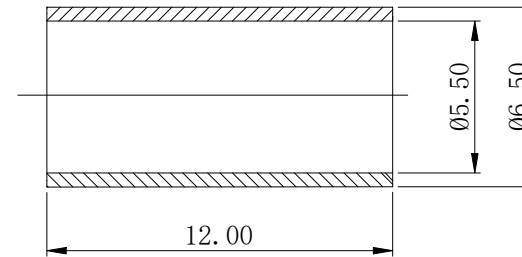
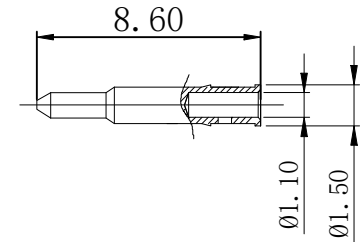
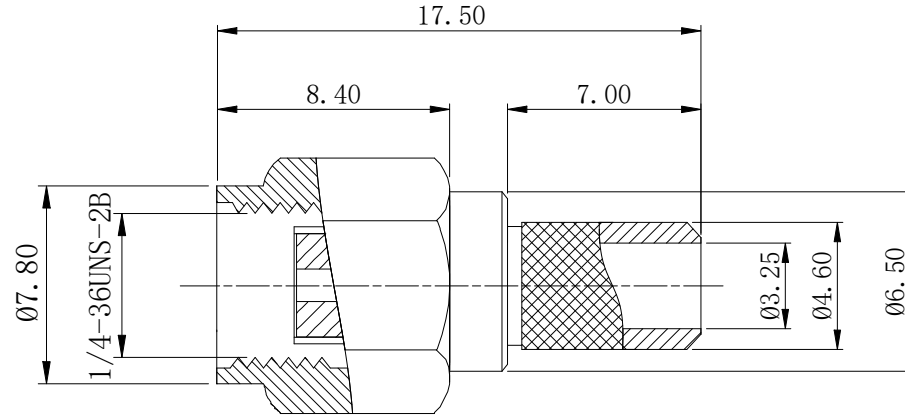
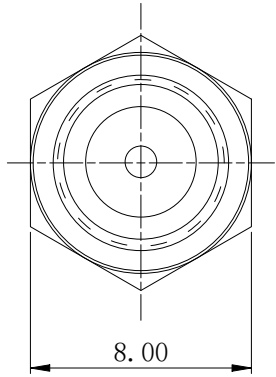




| ISSUE | DESCRIPTION | DWN | DATE | APPROVEN |
|-------|-------------------------|-------|------------|----------|
| RI.0 | First issue | Gavin | 2021/09/13 | JIM.KING |
| RI.1 | variation of parameters | Li | 2026/02/04 | Jason |



Specifications:

IMPEDANCE: 50 Ohms
 Frequency range: 0~6GHZ
 VSWR: 1.5MAX
 Voltage Rating: 335 Volts RMS Continuous
 Dielectric withstand voltage: 1000 V
 Service life: ≥500
 Insulation Resistance ≥5000MΩ
 Center contact resistance: ≤3mΩ
 Outer contact resistance: ≤2mΩ
 Operation Temperature: -55°C ~ +165°C

| | | | | |
|----|----------------|----------|--------|-----|
| 4 | COPPER TUBE | BRASS | NICKEL | 1 |
| 3 | CENTER CONTACT | BRASS | GOLD | 1 |
| 2 | INSULATOR | PTFE | NATURE | 1 |
| 1 | BODY | BRASS | GOLD | 1 |
| NO | DESCRIPTION | MATERIAL | FINISH | QTY |

| | | | | | | |
|---|--|--|-------|------|------|------|
| -TOLERANCES- UNLESS OTHERWISE SPECIFIED | | RENHOTEC GROUP | | | | |
| | | PART DESCRIPTION: SMA PLUG FOR RG58/U, LMR195 CABLE | | | | |
| UNLESS OTHERWISE SPECIFIED TOLERANCES FOR MILLIMETERS ARE: 0.5 - 8mm ± 0.20mm 8 - 30mm ± 0.25mm 30 - 120mm ± 0.30mm | | P/N: RHT-612-0678 | | | | |
| Appr: | | Date | Scale | Unit | Type | Page |
| Check: Jason | | 2026.02.04 | Free | MM | Z | 1/1 |
| Draw: Li | | | | | | |