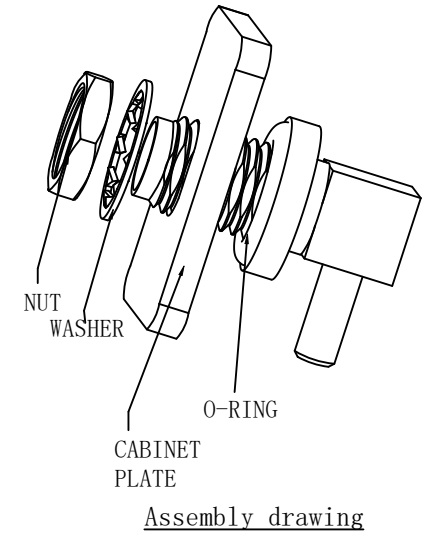
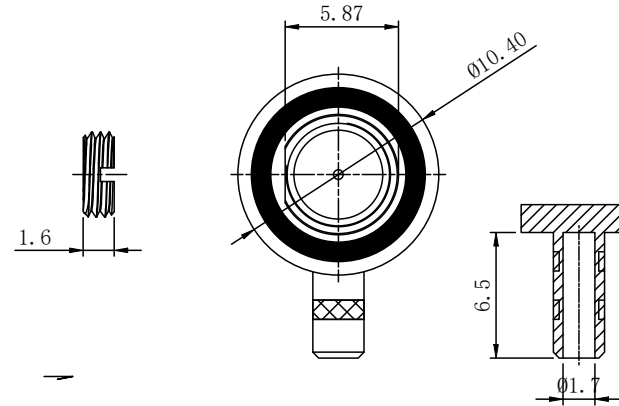
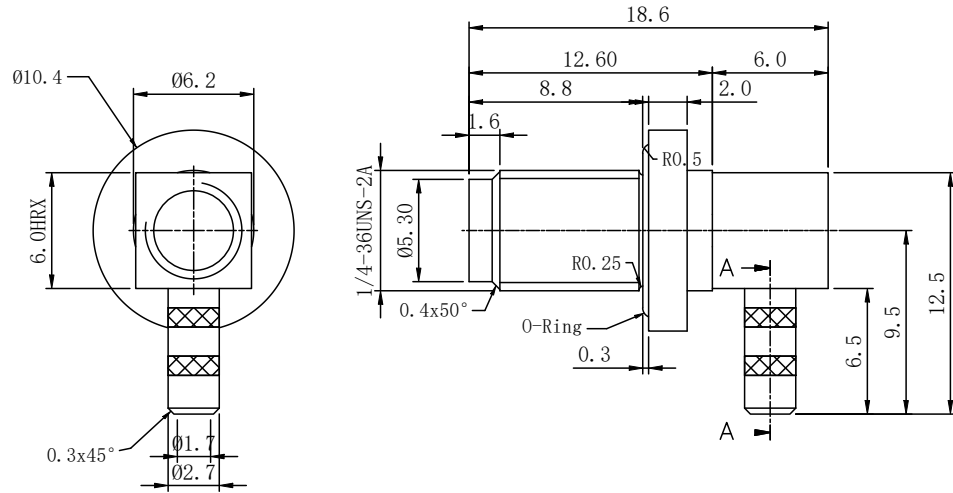


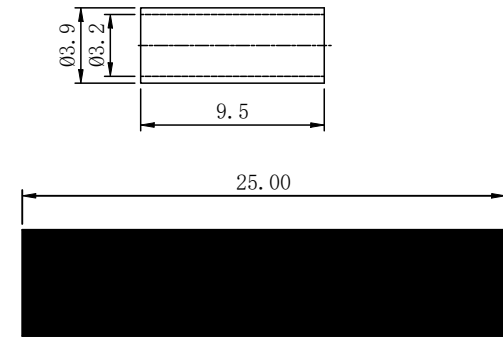
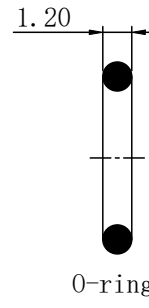
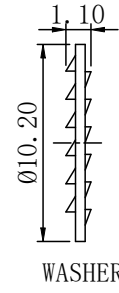
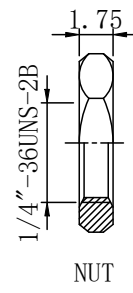
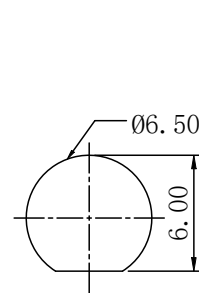


REV	DESCRIPTION	DWN	DATE	APPROVEN
A	First issue	Gavin	2018/09/03	JIM. KING
B	Add the assembly schematic diagram	Li	2026/02/02	Jason



Specifications:

IMPEDANCE: 50 Ohms
 Frequency range: 0~6GHZ
 VSWR: 1.5MAX
 Voltage Rating: 335 Volts RMS Continuous
 Dielectric withstand voltage: 1000 V
 Service life: ≥500
 Insulation Resistance ≥5000MΩ
 Center contact resistance: ≤3mΩ
 Outer contact resistance: ≤2mΩ
 Operation Temperature: -55°C ~ +165°C
 Waterproof Range: IP67, Mated



Recommended hole opening size
(chassis board thickness: 1.2 ~ 3.0 mm)

NO	DESCRIPTION	MATERIAL	FINISH	QTY
9	HEAT SHRINK TUBING	PLASTIC	BLACK	1
8	GLAND	BRASS	GOLD	1
7	SLEEVE	BRASS	GOLD	1
6	NUT	BRASS	GOLD	1
5	GASKET	BRASS	GOLD	1
4	O-RING	EPDM	RED	1
3	PIN	BRASS	GOLD	1
2	INSULATOR	TEFLON	NONE	1
1	BODY	BRASS	GOLD	1

-TOLERANCES-
UNLESS OTHERWISE
SPECIFIED

UNLESS OTHERWISE SPECIFIED
TOLERANCES FOR MILLIMETERS ARE:
0.5 - 8mm ± 0.10mm
8 - 30mm ± 0.15mm
30 - 120mm ± 0.20mm

RENHOTEC GROUP

Appd: PART DESCRIPTION: R/A SMA JACK FOR RG316 CABLE

Check: Jason P/N: RHT-612-0485

Draw: Li

Date	Scale	Unit	Type	Page
2026.02.02	Free	MM	Z	1/1