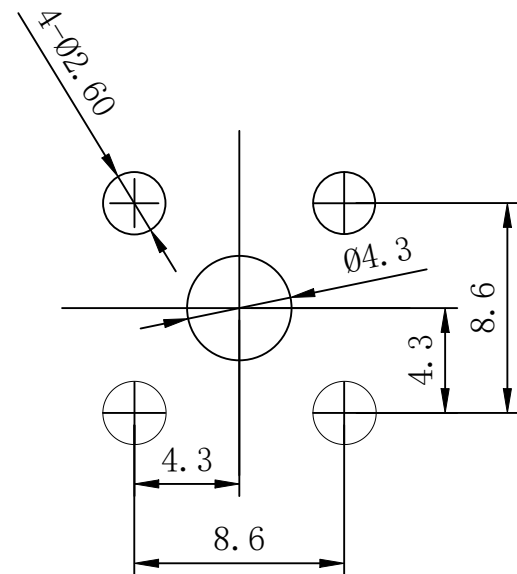
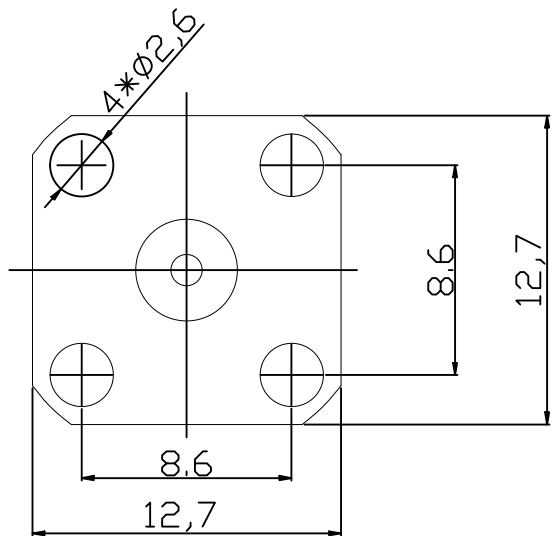
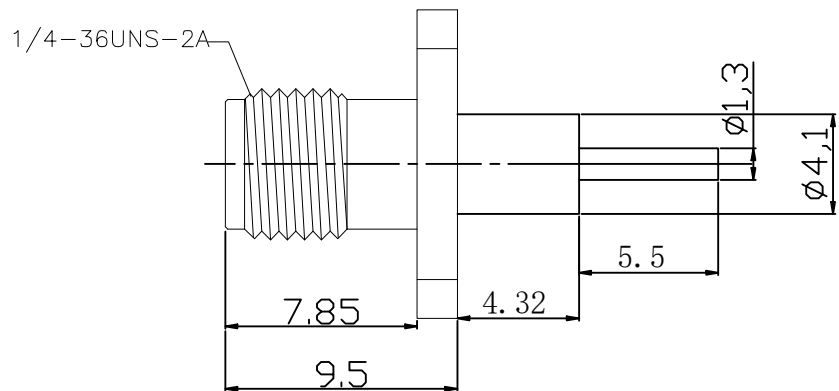




REV	DESCRIPTION	DRAWING	DATE
A	First issue	SAM	2017/04/11
B	Increase the board opening size	Li	2026/02/04



RECOMMENDED  
MOUNTING HOLE

Specifications:

IMPEDANCE: 50 Ohms  
 Frequency range: 0~6GHz  
 VSWR: 1.5MAX  
 Voltage Rating: 335 Volts RMS Continuous  
 Dielectric withstand voltage: 1000 V  
 Service life: ≥500  
 Insulation Resistance ≥5000MΩ  
 Center contact resistance: ≤3mΩ  
 Outer contact resistance: ≤2mΩ  
 Operation Temperature: -55℃ ~ +165℃

3	CONTACT PIN	BER. COPPER	GOLD	1
2	INSULATOR	TEFLON	NATURAL	1
1	BODY	BRASS	GOLD	1
	DESCRIPTION	MATERIAL	FINISH	QTY

-TOLERANCES- UNLESS OTHERWISE SPECIFIED	<b>RENHOTEC GROUP</b>				
			PART DESCRIPTION: SMA PANEL RECEPTACLE JACK		
UNLESS OTHERWISE SPECIFIED TOLERANCES FOR MILLIMETERS ARE: 0.5 - 8mm ± 0.20mm 8 - 30mm ± 0.25mm 30 - 120mm ± 0.30mm	Appr:		P/N: RHT-612-0321		
	Check: Jason	Date	Scale	Unit	Rev
	Draw: Li	2026/02/04	1:1	MM	B
				Page	1/1