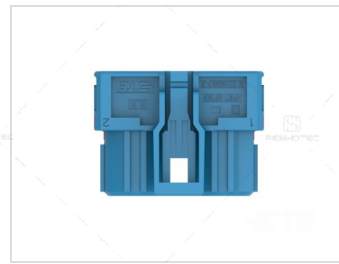
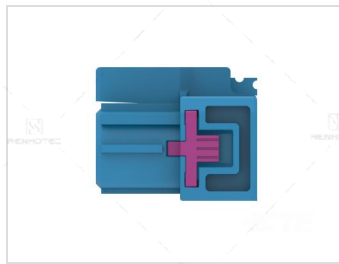
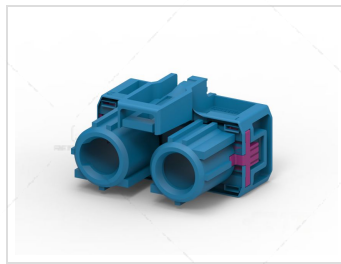
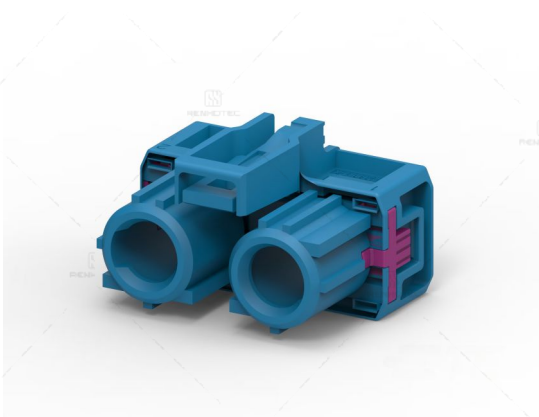


90° Cable Exit 8 Position C Code Housing for Female Terminals 12.7 mm (.5 in) Centerline Crimp Automotive HSD Data Connectivity Housings

Part Number:

**TE-1-2236888-3**



### Basic Information

Number of Positions	8
Series	HSD
Tcpn	1-2236888-3
Product Description	DUAL HSD 12.7MM,SOC HSG,90DEG,COD C
Mixed & Hybrid Connector	No
Number of Rows	1
Keying Code	C
Contact Type	Socket
Center Contact	Without
Connector Mounting Type	Cable Mount (Free-Hanging)
Primary Locking Feature	Clean Body
Connector & Housing Type	Housing for Female Terminals
Snap-Lock	With

### Mechanical Specification

Mating Pin Diameter	.6 mm (.024 in)
Centerline (Pitch)	12.7 mm (.5 in)
Connector Height	15.1 mm (.6 in)
Product Length	27.9 mm (1.09 in)
Product Width	18.2 mm (.71 in)
Cable Exit Type	Fixed
Cable Exit Angle	90°
Panel Attachment Style	Rear Mount

### Material Specification

Contact Mating Plating	Unplated
Housing Color	Blue
Body Material	PBT GF
Ferrule	Without

### Electrical Specification

Connector & Contact Terminates To	Wire & Cable
Mating Retention	With
Impedance ( $\Omega$ )	100.0
Termination to Cable	Crimp
Cable Type	SSQ

### Environmental Specification

Sealable	No
Operating Temperature Range	-40 – 105 °C (-40 – 221 °F)

#### Disclaimer

---

The information in this specification is subject to change without notice. Please confirm the latest version before use. Technical parameters are for reference only, and sufficient testing and verification should be conducted in actual applications.