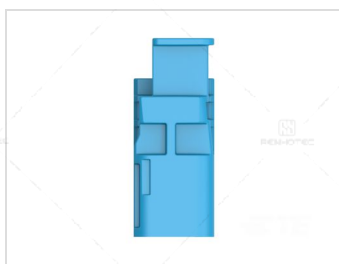
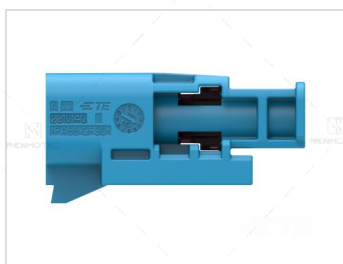
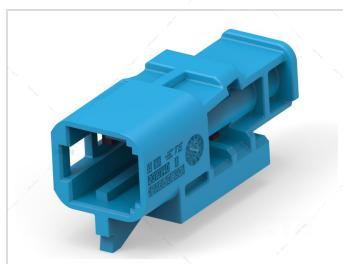


Cable-to-Cable / Wire-to-Wire 180° Cable Exit 1 Position
C Code Housing for Male Terminals Crimp High Speed
Data Data Connectivity Housings

Part Number:

TE-4-2310138-3



Basic Information

Number of Positions	1
Series	MATE-AX
Tcpn	4-2310138-3
Product Description	1POS,MATE-AX,PIN HSG ASSY,COD C,CLIP7MM
Mixed & Hybrid Connector	No
Connector System	Cable-to-Cable Wire-to-Wire
Number of Rows	1
Keying Code	C
Contact Type	Pin
Center Contact	With
Connector Mounting Type	Cable Mount (Free-Hanging)
Primary Locking Feature	On the Terminal
Connector & Housing Type	Housing for Male Terminals
Snap-Lock	Without

Mechanical Specification

Mating Pin Diameter	.4 mm (.016 in)
Connector Height	10.4 mm (.4 in)
Product Length	9.1 mm (.35 in)
Product Width	25.7 mm (1.01 in)
Cable Exit Type	Straight
Cable Exit Angle	180°

Material Specification

Contact Mating Plating	Silver (Ag)
Housing Color	Light Blue
Body Material	PA66 GF30
Outer Contact Plating	Tin (Sn)
Ferrule	With

Electrical Specification

Connector & Contact Terminates To	Wire & Cable
Contact Current Rating (Max) (A)	3
Mating Retention	Without
Impedance (Ω)	100.0
Termination to Cable	Crimp
Cable Type	RG 174 RTK 031

Environmental Specification

Sealable	No
Operating Temperature (Max)	105 °C (221 °F)

Disclaimer

The information in this specification is subject to change without notice. Please confirm the latest version before use. Technical parameters are for reference only, and sufficient testing and verification should be conducted in actual applications.