



MIL-DTL-26482 MS3116F-10-6S Female Straight Plug,
No.10 Shell 6Pin, PT06E-10-6S-SR

Part Number:

PT06E-10-6S-SR

basic_information

series	MIL-DTL-26482 Series I
connector_type	Plug
orientation	Straight
contact_type	Female
number_of_positions	6
shell_size	10
fastening_type	Bayonet
mount_type	Cable
mount_feature	Straight
contact_termination	Solder

material_specification

wire_gauge	20,22,24AWG
shell_material	Aluminum Alloy
shell_finish	Cadmium olive drab
insulation_material	PPS
contact_material	Copper Alloy
contact_finish	Gold
shell_color	Olive Drab

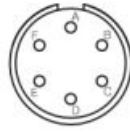
environmental_specification

protection_rating	IP67
operating_temperature	-55°C to +125°C

electronic_specification

shielding	Shield
rated_current	7.5A
rated_voltage	AC:600V DC:850V

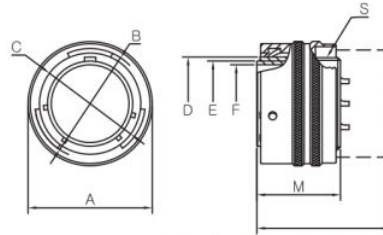
contact_layout_image



size

系列MS3116等级A, E, F, J & P
MS3116 Class A, E, F, J & P

直式插头
Straight plug



终端组件 Termination Assembly

外壳号尺寸 Shell Size	Φ A max	Φ B +0.13 ~ -0.15	Φ C +0.13 ~ -0.03	Φ D +0.13 ~ -0.15	Φ E +0.03 ~ -0.13	Φ F min	M ±0.13	S THD-2A
8	19.86	14.63	12.22	10.11	9.07	7.42	21.10	7/16-28UNEF
10	23.52	17.70	15.23	13.36	12.32	10.39	21.10	9/16-24UNEF
12	26.49	22.12	19.33	17.14	15.17	13.28	21.10	11/16-24UNEF
14	30.05	25.27	22.48	20.32	18.34	16.46	21.10	13/16-20UNEF
16	33.15	28.45	25.65	23.49	21.52	19.61	21.10	15/16-20UNEF
18	35.33	31.62	28.85	26.03	24.06	21.89	21.10	1 1/16-18UNEF
20	38.89	34.80	32.00	29.21	27.23	25.07	24.90	1 3/16-18UNEF
22	42.06	37.97	35.18	32.39	30.41	28.22	24.90	1 5/16-18UNEF
24	45.13	41.25	38.35	35.56	33.58	31.42	26.40	1 7/16-18UNEF

Disclaimer

The information in this specification is subject to change without notice. Please confirm the latest version before use. Technical parameters are for reference only, and sufficient testing and verification should be conducted in actual applications.